



Monitoring System

DK2OM – Wolf Hadel
Co-ordinator of IARUMS Region 1
Editor of the Newsletter

DJ9KR – Uli Bihlmayer
Vice Co-ordinator of IARUMS Region 1
Editor of the German Overview

The monthly newsletter for Region 1

October 2012

The 24 members of the IARUMS Region 1 Monitoring Team:



Acknowledgements

++ ARI: DH7SA – Salvatore ++ ARSK: 5Z4NU - Ted ++ ASTRA: DL1BDF – Mustapha ++ DARC: DJ9KR – Uli ++
++ ERASD: SU1SA – Sayed ++ IARC: 4Z1AB – Amos ++ IRTS: EI5DD - Steve ++ KARS: 9K2RR – Faisal ++
++ MARL: 9H1M – Dominic ++ MRASZ: HA7PL - Laci ++ NARS: 5N9AYM – Yusuf ++ NRRL: LA4EU – Hans Arne ++
++ OEVSU: OE3GSA – Gerd ++ PZK: SP3SUZ – Wladyslaw ++ RAL: OD5RI – Riri ++ REP: CT4AN – Jose ++
++ RSGB: G4BOH - Chris ++ SARL: ZS1FCS - Fred ++ SRAL: OH2BLU - Pekka ++ UBA: ON4VJ - Johny ++
++ URE: EA5DY - Salvador ++ USKA: HB9CET - Peter ++ VERON: PA2GRU - Dick ++ ZRS: S56ZDB – Darko ++
++ G3VZV – Graham (satellite) ++ TG9ADV – Jorge (Co-ordinator Region 2) ++ VK3MV – Peter (Co-ordinator Region 3) ++
++ DF8FE – (Webmaster assis.) ++ DL8AAM (ALE) ++ DJ7KG (BUOYS) ++ DF5SX (BC) ++ DARC (server support) ++
++ OD5TE (Hani) ++ VE6SH – Tim (IARU President) ++ PB2T – Hans (IARU R1 President) ++ 9A5W - Nikola (EC-IARU-R1
++ PTTs: German (BNetzA), BAKOM (Switzerland), OFCOM (UK) ++ SK6AW – DX-Cluster ++

Part 1: News and infos

Part 2: Detailed reports of the national co-ordinators

Part 1: News and Infos

1. Actions by the German BNetzA (official complaints) and results

7032.0 kHz - 12 x 120 Bd BPSK – AT3004D, daily, area of Voronezh, RUS - **removed**
7117.0 kHz – F1B 100 Bd, 500 or 1000 Hz shift, all day, “**REA4**” - RUS airforce Moscow – **QSY to 7018!**
21300.0 kHz – F1B 100 Bd, 2000 Hz shift, 4th from 5325 kHz, daily, RUS – **no change**
21424.0 kHz – F1B 50 Bd, 400 Hz shift, 2nd from 10712 kHz, daily, Novgorod, RUS – **still active**
14075 – 14125 kHz – FMCW – CODAR (radar) – N. E. India – **still active** – not audible in Germany during Summer
7000, 14000, 14250, 21000 kHz – FMCW - French radar 6 sps, 20 kHz wide burst system – after a break **active again** (German PTT is informed)

2. CIS taxi business – worse as ever before

The 10 m-band is completely crowded of CIS taxis, now transmitting in 5 kHz increments using NFM. Locations: Russia, Belorussia, Ukraine, Kazakhstan. They do not respect any amateur traffic as usual. The earlier complaint by DJ9KR brought no results. About 95 % of all taxis are from Russia.
Now even from Moscow on 21404.2 kHz in FM. Taking passengers to Central Baths (BASSEIN) and Cultural Center (DOM KULTURY) and some unspecified stations (STANTSIAS)

3. New: Datawell Waverider buoys on 29500 and 29525 kHz

Datawell buoys are now transmitting 29500 (Gibraltar) and 29525 (Casablanca) with F1B and 81.9 Bd. The Dutch Monitoring System is informed.

URL Datawell: <http://www.datawell.nl/inhoud.php?id=1>

4. F1B bursts from Portugal on 29 MHz

F1B burst group – each F1B signal with 51 Bd and 320 Hz shift. QRGs: 28025, 28100, 28150, 28200 kHz, Location: Atlantic Ocean, West of Lisbon, purpose still unknown. The Portuguese Monitoring System has been informed.

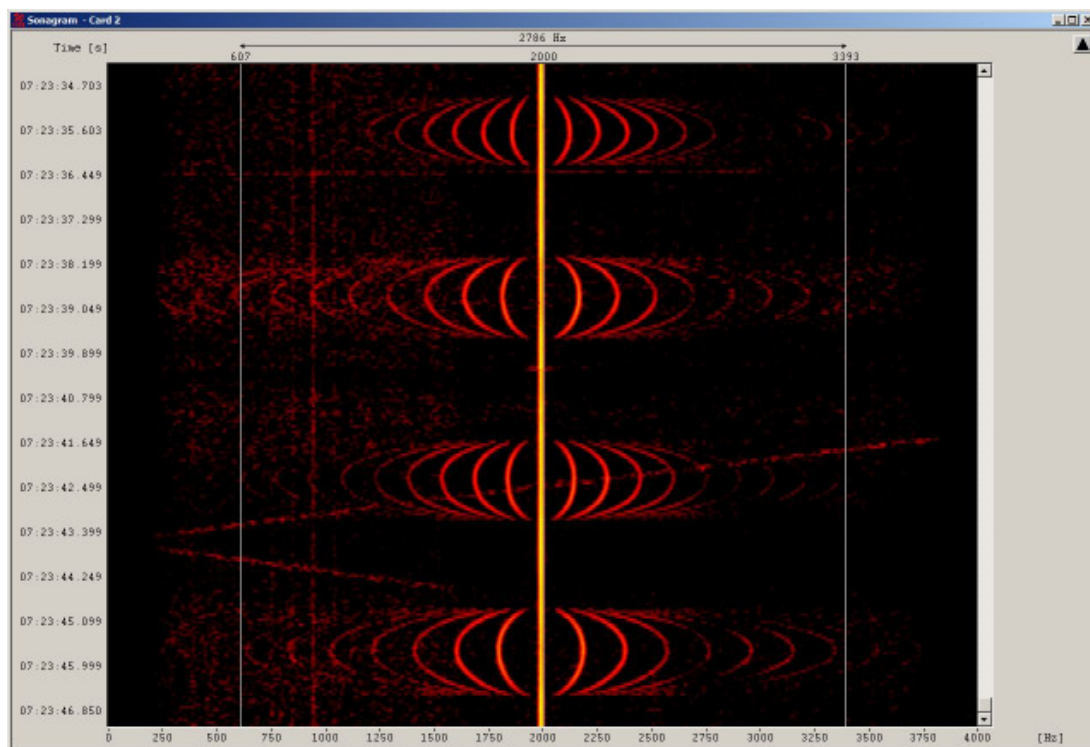
5. Mysterious signals on 14000, 15000, 18000 and 21000 kHz from China

HB9CET found these signals on Oct. 25th. He observed and described the “grunt or moo noises” the first time. The source of the emissions was Central China. The purpose is unknown. Chinese Halloween???

Observe the screenshot below! Soundfile: Recording by DK2OM.

soundfile: <http://www.iarums-r1.org/iarums/sound/21000-grunt.wav>

Screenshot: DK2OM with Wavecom W-Code – transmission in A3E (carrier and both sidebands with the moo / grunt noise) – The ionosondes below have no relation to the grunt signal!



- 6. Homepage IARU Region 1
- Homepage IARUMS Region 1
- Homepage IARUMS Region 2
- Homepage IARUMS Region 3
- Intruderlogger Region 1

<http://www.iaru-r1.org/>
<http://www.iarums-r1.org>
<http://www.iaru-r2.org/>
<http://www.iaru-r3.org/ms/>
<http://peditio.net/intruder/bluechat.cgi>

Part 2: Detailed reports of the national Co-ordinators

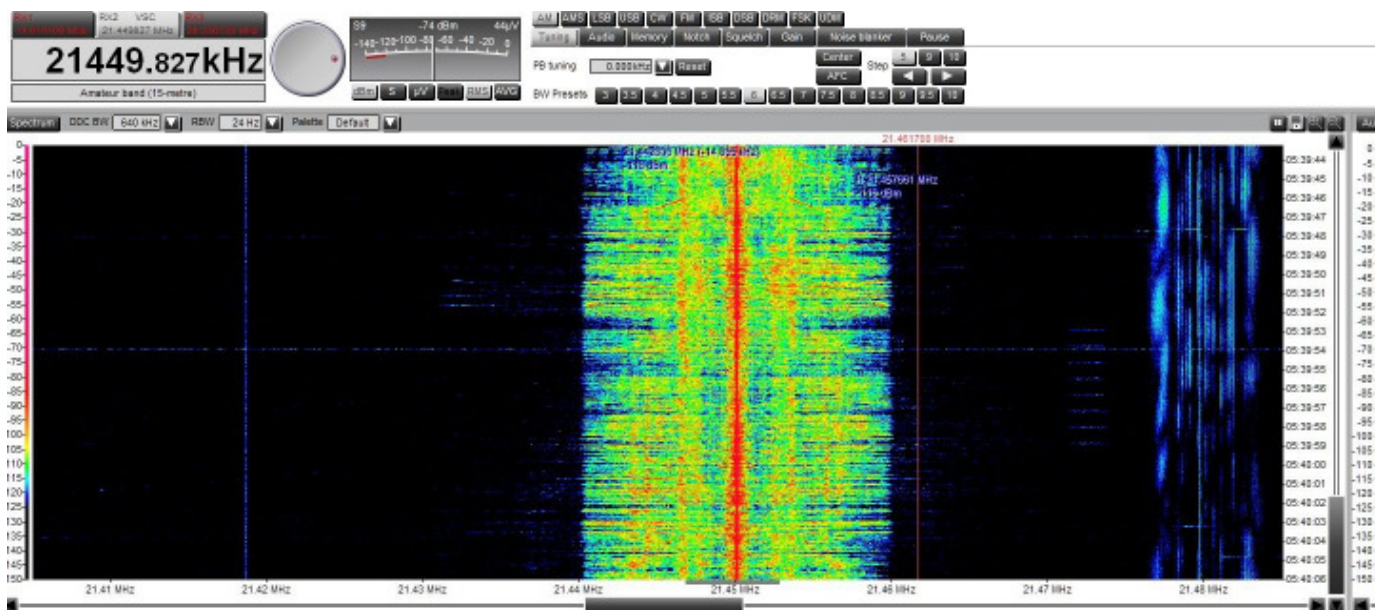
DD = day *** **MM** = month *** **dly** = daily *** **vt** = various times *** **vd** = various days *** **BD** = Baud *** **SH** = shift ***
SP = spacing *** **Mode** = mode of transmission *** **A3E** = AM *** **A1A** = CW *** **J3E-U** = USB *** **J3E-L** = LSB *** **FSK (F1B)** = frequency shift keying *** **PSK** = phase shift keying *** **OFDM** = orthogonal frequency division multiplex
ALE (MIL-188-141A) = automatic link establishment *** **MUX** = multiplex *** **Ui (unid)** = unidentified *** **Illicit** = illegal
*** **UiLL** = unidentified illegal *** **BC** = broadcast *** **MIL** = military *** **PTR** = printer *** **NGO** = non governmental organization *** **ITU** = ITU country abbreviation *** **PRC** = People's Republic of China *** **PLA** = People's Liberation Army *** **MFA** = Ministry of Foreign Affairs *** **MOI** = Ministry of Interior *** **MOPO** = Ministry of Public Order *** **IARUMS** = IARU Monitoring System *** **UTC** = Universal Time Coordinated *** **pps** = pulses per second (earlier radar systems) *** **sps** = sweeps/sec (radar systems) *** **FMCW** = frequency modulated continuous wave (OTH and coastal Radars)
5BL = 5 cyrillic lettergroups

Newsticker +++ Newsticker +++ Newsticker +++ Newsticker +++ Newsticker +++ Newsticker

ZL1GWE – John Martin – Monitoring System Coordinator NZART - reports from Region 3: RFA (Radio Free Asia) transmitting on 21450 kHz!

The broadcast station responsible is Radio Free Asia: <http://www.rfa.org/english/> US International Broadcasting or Voice of America - broadcasting in Mandarin. The transmissions are marred by another transmission, which attempts to block it, albeit unsuccessfully, given the size of the main broadcast transmitter being used. The intrusion was first reported on 3 November 2012 by NZART commencing at 0300z until 0600z and continues today 4th November 2012. There was a brief transmission on 4th November at 0105z and it turned off again at 0106z. Normal transmission commenced at 0300z again today. The broadcast has a centre frequency of 21450 kHz, A3E/AM transmission directly intruding into the upper segment of the International allocated primary amateur radio spectrum.

This is clearly shown within the screenshot below:



It is a very strong signal, and is seen to be spattering into the 21 MHz amateur radio frequency primary spectrum. It shown to be in excess of -97 dBm or 105 microvolts. My receiver noise floor is -150 dBm in a rural location. Equipment: The professional receiver used is a Winradio G33DDC HF receiver, which is calibrated within a few cycles or ppm using the WWV 10 MHz signal. The signal meter is calibrated in accordance with international standards, hence dBm and microvolts are shown in the screenshots.

HF radio schedules:

I have used the HFCC (hfcc.org) A12 schedules and B12 schedules (b12allx2.zip) - B12all00.TXT

21450 [0300 0600 42-44](http://www.rfa.org/english/) TIN 250 304 24 216 1234567 281012 300313 D 16000 Mandarin USA IBB IBB 7462

This is also shown in the eibispace.de HF Broadcast station listing:

<http://www.eibispace.de/dx/freq-b12.txt>

21450 [0300-0600](http://www.rfa.org/english/) USA Radio Free Asia M FE /MRA-t

This problem will be solved very soon. It is an example for our excellent worldwide cooperation.

Many thanks for observations, reports and assistance to ZL1GWE, K1ZZ and DF5SX!

ARSK MONITORING OVERVIEW FOR OCTOBER 2012

The broadcasts from Khartoum on 7200 kHz, Addis Ababa and Asmara (Eritrea) on other 40 meter frequencies between 7100 and 7200 kHz continued as before, as well as Radio Hargeisha on 7120 kHz. Listening from Kilifi on the coast was unsuccessful and no intruders were heard.

E.H.M. Alleyne, 5Z4NU
ARSK National IARUMS Co-ordinator

ARSK – Kenya – 5Z4NU (Ted)

| ARSK | kHz | UTC | DD | MM | ITU | IDENT | MODE | DETAILS |
|------|--------|------|---------------------|----|--------------|-----------|------|---|
| ARSK | 7120.0 | 1700 | dly | 10 | SOM | Hargeisha | A3E | Radio Hargaisa, Republic of Somaliland (not Somalia.) |
| ARSK | 7175.0 | vt | dly | 10 | ERI? | UiBC | A3E | VOBM or Addis Abasa |
| ARSK | 7190.0 | vt | dly | 10 | ERI? ETH? | UiBC | A3E | VOBM or Addis Ababa. |
| ARSK | 7200.0 | vt | dly from 12/9 | 10 | SDN | Khartoum | A3E | Broadcast, Khartoum. |

DARC 1 – Germany – DJ9KR (Uli) BC transmissions, IM products, harmonics = blue

| CLUB | kHz | UTC | DD | MM | ITU | Call Sign | MODE | BD | SH | Remarks and Comments |
|------|--------|------|----|----|------------|-----------|-------|-----|------|--|
| DARC | 6999,0 | 1617 | 03 | 10 | | UiMUX | PSK2 | | | AT-3004-D, 3 kHz spread into ham band |
| DARC | 7000,0 | 2349 | 01 | 10 | B / POR | UiILL | J3E-L | | | 2 male persons in Portuguese voice, Portugal or Brasil |
| DARC | 7000,0 | vt | 02 | 10 | I | UiILL | J3E-L | | | 2 male persons in Italian voice |
| DARC | 7000,0 | 0120 | 05 | 10 | E | UiILL | J3E-L | | | Spanish male net |
| DARC | 7000,0 | 0237 | 07 | 10 | | UiILL | J3E-L | | | unid male voice and language |
| DARC | 7000,0 | 2053 | 17 | 10 | I | UiILL | J3E-L | | | net of Italian male persons, other than 7000,2 activity at the same time |
| DARC | 7000,0 | 2024 | 19 | 10 | RUS | UiMUX | PSK2 | | | AT-3004-D |
| DARC | 7000,0 | vt | 30 | 10 | I | UiILL | J3E-L | | | 2000 - 2030: large net, Italian male persons. Their language is that of radio amateurs |
| DARC | 7000,0 | vt | vd | 10 | E | UiILL | J3E-U | | | Spanish fishery |
| DARC | 7000,0 | vt | vd | 10 | INS | UiILL | J3E | | | Indonesian pirates, using SSB-USB and alternatively SSB-LSB, daily - heard at 1640, 1900 |
| DARC | 7006,0 | 1449 | 08 | 10 | | UiPTR | F1B | | | fast reversals |
| DARC | 7007,5 | 2107 | 01 | 10 | (MR C) | UiILL | J3E-U | | | unid male voices, unid language, poss. MRC |
| DARC | 7008,0 | 2030 | 20 | 10 | RUS | UiPTR | F1B | | | printer, RUS MIL Moscow |
| DARC | 7013,7 | 2019 | 14 | 10 | | UiILL | J3E-U | | | male voices, whistles |
| DARC | 7032,0 | 0120 | 05 | 10 | RUS | UiMUX | PSK2 | 120 | 2600 | AT-3004-D, location Penza |
| DARC | 7038,7 | 2018 | 03 | 10 | UKR | beacon D | A1A | | | beacon D, Sevastopol |
| DARC | 7038,9 | vt | vd | 10 | RUS | beacon S | A1A | | | beacon "S" - Severomorsk |
| DARC | 7039,0 | 2018 | 03 | 10 | RUS | beacon P | A1A | | | beacon P, Kaliningrad |
| DARC | 7039,0 | vt | vd | 10 | RUS | beacon C | A1A | | | beacon "C" - Moscow heard 0700, 1800, 1900 |
| DARC | 7039,1 | vt | vd | 10 | KGZ | beacon A | A1A | | | beacon "A" - Bishkek |

| CLUB | kHz | UTC | DD | MM | ITU | Call Sign | MODE | BD | SH | Remarks and Comments |
|------|--------|------|-----|----|-----|-----------------------|------|-----|------|--|
| DARC | 7039,2 | 2346 | 01 | 10 | RUS | beacon L | A1A | | | beacon "L" - St. Petersburg |
| DARC | 7039,2 | vt | vd | 10 | RUS | beacon F | A1A | | | beacon "F" - Vladyvostok |
| DARC | 7039,2 | vt | vd | 10 | RUS | beacon L | A1A | | | beacon "L" - St. Petersburg |
| DARC | 7039,4 | vt | vd | 10 | RUS | beacon K | A1A | | | beacon "K" - Petropavlovsk |
| DARC | 7039,5 | vt | vd | 10 | RUS | beacon M | A1A | | | beacon "M" - Magadan |
| DARC | 7051,5 | 2017 | 30 | 10 | | UiMUX | XXX | | | mux, humming noise |
| DARC | 7054,0 | 2018 | 30 | 10 | RUS | RUS Navy | F1B | 50 | 200 | RUS RUS Navy daily heard 0600 - 2330, 0056, fast reversals most of the time |
| DARC | 7054,0 | h24 | vd | 10 | RUS | RUS Navy | F1B | 50 | 200 | RUS RUS Navy |
| DARC | 7100,0 | vt | 15 | 10 | | UiPTR | F1B | | | unid printer heard 0315 - 0513 |
| DARC | 7100,0 | 1525 | vd | 10 | ETH | Govt. Jam | JAM | | | white noise jammer by Ethiopian Government |
| DARC | 7100,0 | 1525 | vd | 10 | ERI | VOBME | A3E | | | under wn-jammer |
| DARC | 7100,0 | 1745 | vd | 10 | ERI | VOBME | A3E | | | HOA mx S9, weak modulation, found // 7165 |
| DARC | 7102,0 | vt | vd | 10 | | UiPTR | F1B | | | unid printer heard all month at 1350 - 1800 |
| DARC | 7105,0 | 2159 | 04 | 10 | TWN | Sound of Hope | A3E | | | weak Chinese signal |
| DARC | 7105,0 | 2200 | 04 | 10 | CHN | Soh Xi Wang Zhi Sheng | A3E | | | Chinese px S9+25dB s/on to jam Sound-of-Hope, Soh-Xi-Wang" found // on 7205 with same px |
| DARC | 7105,0 | 2109 | 06 | 10 | | UiCAR | N0N | | | long lasting carrier 70 dBm |
| DARC | 7105,0 | 2227 | 15 | 10 | CHN | Soh Xi Wang Zhi Sheng | A3E | | | Chinese px in order to jam Sound of Hope |
| DARC | 7105,0 | 2227 | 15 | 10 | TWN | Sound of Hope | A3E | | | Chinese px |
| DARC | 7105,0 | 2245 | 15 | 10 | CHN | Soh Xi Wang Zhi Sheng | A3E | | | Chinese px S9+25dB s/on to jam Sound-of-Hope, report DL IPT |
| DARC | 7110,0 | 1436 | 05 | 10 | | UiCAR | N0N | | | long lasting carrier |
| DARC | 7110,0 | 2350 | 06 | 10 | BRM | R.Myanmar | A3E | | | Western music |
| DARC | 7110,0 | 0020 | 07 | 10 | BRM | R.Myanmar | A3E | | | heard with remote rx, tx-er is Pyin oo Lwin, romantic sweet music - rekrpt DF5SX |
| DARC | 7110,0 | 1449 | 07 | 10 | | UiBC | A3E | | | weak BC |
| DARC | 7110,0 | vt | dly | 10 | BRM | R.Myanmar | A3E | | | sked: 0030-0130, 1030-1500, 2330-0030 |
| DARC | 7110,0 | 1545 | vd | 10 | ERI | VOBME | A3E | | | under heavy jam by ETH |
| DARC | 7110,0 | 1545 | vd | 10 | ETH | Govt. Jam | JAM | | | heavy white noise jam |
| DARC | 7115,0 | 1630 | vd | 10 | ERI | VOBME | A3E | | | is active |
| DARC | 7115,0 | 1630 | vd | 10 | ETH | Govt. Jam | JAM | | | white noise jammer on VOBME |
| DARC | 7116,5 | 0435 | 04 | 10 | RUS | UiCAR | N0N | | | unmodulated carrier |
| DARC | 7117,0 | vt | 02 | 10 | RUS | RUS Navy Moscow | F1A | 100 | 1000 | heard 1455 - 1801, fast reversals, very harmful - is Russian Navy Moscow |
| DARC | 7117,0 | vt | 23 | 10 | RUS | RUS Navy | F1B | 100 | 1000 | heard 1459-1633 |
| DARC | 7117,0 | vt | vd | 10 | RUS | RUS Navy | F1A | 100 | 1000 | fast reversals most of the time, with occasional CW in F1A, Russian letters, very harmful!, location Kaliningrad |
| DARC | 7120,0 | 1527 | 22 | 10 | SOM | R.Hargaysa | A3E | | | HOA music |
| DARC | 7120,0 | 1459 | 23 | 10 | SOM | R.Hargaysa | A3E | | | carrier, at 1503 Al-Qur' an recitals |

| CLUB | kHz | UTC | DD | MM | ITU | Call Sign | MODE | BD | SH | Remarks and Comments |
|------|--------|------|-----|----|-----|-------------------|-------|----|-----|---|
| DARC | 7120,0 | 1649 | 26 | 10 | SOM | R.Hargays a | A3E | | | Ar px |
| DARC | 7120,0 | 1708 | 27 | 10 | SOM | R.Hargays a | A3E | | | Ar px |
| DARC | 7120,0 | vt | dly | 10 | SOM | R.Hargays a | A3E | | | sked: 0320-0500, 1320-1400, 1500-1900 |
| DARC | 7155,0 | 1737 | 04 | 10 | CHN | OTH- Radar | FMCW | | | chirping pulses 7150 - 7160 (10 kHz) |
| DARC | 7155,0 | 2027 | 07 | 10 | | UiMUX | PSK2 | | | AT-3004-D |
| DARC | 7160,0 | 1635 | 03 | 10 | ETH | Govt. Jam | JAM | | | white noise jammer |
| DARC | 7160,0 | 1635 | 03 | 10 | ERI | VOBME | A3E | | | from 7165 |
| DARC | 7160,0 | 1733 | vd | 10 | ETH | Govt. Jam | JAM | | | heavy white noise jam |
| DARC | 7160,0 | 1733 | vd | 10 | ERI | VOBME | A3E | | | under heavy white noise jam |
| DARC | 7165,0 | 1633 | 03 | 10 | ETH | Govt. Jam | JAM | | | white noise jammer |
| DARC | 7165,0 | 1633 | 03 | 10 | ERI | VOBME | A3E | | | covered by white noise jammer, to 7160 |
| DARC | 7165,0 | 1723 | 14 | 10 | ETH | Govt. Jam | JAM | | | white noise jammer |
| DARC | 7165,0 | vt | vd | 10 | ERI | VOBME | A3E | | | seems to be main tx-ing frequency |
| DARC | 7166,0 | vt | 14 | 10 | RUS | UiMUX | APSK2 | | | AT-3004-D , BPS, heard 1619 - 2005, location area of Mosocw |
| DARC | 7170,0 | 1610 | 03 | 10 | ERI | VOBME | A3E | | | is active |
| DARC | 7170,0 | 1610 | 03 | 10 | ETH | Govt. Jam | JAM | | | Ethiopian Government jammer on VOBME, White Noise |
| DARC | 7175,0 | 1616 | 03 | 10 | ERI | VOBME | A3E | | | weak modulation |
| DARC | 7175,0 | 1507 | 11 | 10 | ERI | VOBME | A3E | | | barely audible under the wn jammer |
| DARC | 7175,0 | 1507 | 11 | 10 | ETH | Govt. Jam | JAM | | | jamming VOBME with white noise |
| DARC | 7176,0 | vt | 03 | 10 | RUS | UiPTR | F1B | 75 | 250 | printer, location Odessa |
| DARC | 7180,0 | 0332 | 02 | 10 | ERI | VOBME | A3E | | | Arabic px |
| DARC | 7180,0 | 1625 | 02 | 10 | ERI | VOBME | A3E | | | under white noise jammer |
| DARC | 7180,0 | 1625 | 02 | 10 | ETH | Govt. Jam | JAM | | | wn jammer 10 kHz spread |
| DARC | 7180,0 | 1710 | 12 | 10 | ERI | VOBME | A3E | | | Ar px |
| DARC | 7185,0 | 1647 | 03 | 10 | ERI | VOBME | A3E | | | under white noise jammer |
| DARC | 7185,0 | 1647 | 03 | 10 | ETH | Govt. Jam | JAM | | | white noise jammer |
| DARC | 7185,0 | 0448 | 11 | 10 | ETH | Govt. Jam | JAM | | | jamming VOBME with white noise |
| DARC | 7185,0 | 1524 | 11 | 10 | ERI | VOBME | A3E | | | HOA music |
| DARC | 7185,0 | 1432 | vd | 10 | ETH | Govt. Jam | JAM | | | white noise jammer |
| DARC | 7185,0 | 1432 | vd | 10 | ERI | VOBME | A3E | | | covered by white noise jammer |
| DARC | 7185,7 | vt | dly | 10 | BRM | R.Myanma r | A3E | | | sked: 0030-0230, 1030-1330, 2330-0030 |
| DARC | 7186,0 | 2110 | 278 | 10 | RUS | UiMUX | PSK5 | | | AT-3004-D |
| DARC | 7187,0 | 0123 | 21 | 10 | RUS | UiMUX | PSK2 | | | AT-3004-D |
| DARC | 7188,5 | 1436 | 05 | 10 | | UiMUX | PSK2 | | | AT-3004-D, guard carrier on 7190 |
| DARC | 7189,7 | vt | dly | 10 | CLN | SLBC Sri Lanka | A3E | | | sked: 0020-0230, 0930-1215 |
| DARC | 7189,8 | vt | 07 | 10 | CLN | SLBC Sri Lanka | A3E | | | heard 0140 - 0145 with remote rx, tx-er is Ekala - report DF5SX |
| DARC | 7190,0 | 0511 | 08 | 10 | | UiBC | A3E | | | weak signal |
| DARC | 7190,0 | 0505 | 19 | 10 | ERI | VOBME | A3E | | | under white noise jammer |
| DARC | 7190,0 | 0505 | 19 | 10 | ETH | Govt. Jam | JAM | | | white noise jammer |
| DARC | 7200,0 | 1630 | 03 | 10 | SDN | V. of Sudan | A3E | | | Ar px |
| DARC | 7200,0 | 1652 | 03 | 10 | ETH | R.Ethiopia | A3E | | | English px "This is the External Service of R. Ethiopia, Box 654 Addis Ababa" |
| DARC | 7200,0 | 1700 | 03 | 10 | ETH | R.Ethiopia | A3E | | | French px s/on |
| DARC | 7200,0 | 0250 | 06 | 10 | SDN | V. of Sudan | A3E | | | Holy Qur' an recitals, Ar px, ann: "Huna |

| CLUB | kHz | UTC | DD | MM | ITU | Call Sign | MODE | BD | SH | Remarks and Comments |
|------|---------|------|-----|----|------|------------------------|-------|-----|------|---|
| | | | | | | | | | | Omdurman" |
| DARC | 7200,0 | 2011 | 13 | 10 | SDN | V. of Sudan | A3E | | | Ar mx and px |
| DARC | 7200,0 | 1701 | 17 | 10 | ETH | Ext. Serv. R. Ethiopia | A3E | | | 1701: s/on French px, still on at 1654 - 1707: ann.: "This is the External Service of Radio Ethiopia, Box 654 Addis Ababa |
| DARC | 7200,0 | 1526 | 18 | 10 | SDN | V. of Sudan | N0N | | | carrier - at 1729: Somali and Arabic language |
| DARC | 7200,0 | 1554 | 19 | 10 | SDN | V. of Sudan | A3E | | | Ar px heard 1554 - 1600 s/off |
| DARC | 7200,0 | 1622 | 19 | 10 | ERI | VOBME | A3E | | | covered by white noise jammer |
| DARC | 7200,0 | 1622 | 19 | 10 | ETH | Govt. Jam | JAM | | | white noise jammer |
| DARC | 7200,0 | 2052 | 19 | 10 | E.Af | UiBC | A3E | | | HOA music S9+25dB |
| DARC | 7200,0 | 1527 | 23 | 10 | | UiBC | N0N | | | long lasting carrier |
| DARC | 7200,1 | 0137 | 07 | 10 | BRM | R.Myanmar | A3E | | | is Myanmar Yangoon, distorted audio, exact QRT is 7200,088 - report DF5SX |
| DARC | 7205,0 | 2000 | dly | 10 | | UiBC | A3E | | | French px, splattering down heavily till 7185 |
| DARC | 7210,0 | 1720 | 03 | 10 | | UiBC | A3E | | | splatters till 7200 |
| DARC | 7210,0 | 2350 | 06 | 10 | CHN | R.China | A3E | | | Spanish px, overmodulated, causing harmful splatters into ham band, s/off at 2358 |
| DARC | 10110,0 | vt | 03 | 10 | | UiOTHR | FMCW | | | OTH-Radar |
| DARC | 10115,0 | 2130 | dly | 10 | E | UiILL | J3E-U | | | Spanish fishery |
| DARC | 10121,5 | vt | vd | 10 | MRC | UiILL | J3E-U | | | Moroccan fishery |
| DARC | 10131,0 | 2113 | 13 | 10 | MRC | UiILL | J3E-U | | | male net in Arabic |
| DARC | 10135,1 | vt | vd | 10 | | UiILL | J3E-U | | | unid pirates, unid language |
| DARC | 10135,4 | vt | vd | 10 | | UiILL | J3E-U | | | unid pirates heard 2000 - 2100 UTC |
| DARC | 10150,0 | vt | vd | 10 | MRC | UiILL | J3E-U | | | Moroccan fishery |
| DARC | 14001,5 | 2040 | 06 | 10 | | UiMUX | | | | Stanag-4285 |
| DARC | 14002,0 | 1424 | 05 | 10 | I | UiMUX | PSK8 | 2k4 | 2400 | Stanag-4285, location Bologna |
| DARC | 14024,0 | vt | 19 | 10 | RUS | UiPTR | F1B | 200 | 500 | RUS Navy Kaliningrad, heard 1725 - 2024 |
| DARC | 14080,0 | vt | 02 | 10 | RUS | UiILL | J3E-U | | | Ru figure spelling, female, heard 0603 - 0605 - DD6UBS |
| DARC | 14180,0 | vt | 11 | 10 | UKR | RUS Navy Minsk | F1B | 50 | 250 | heard 1512 - 1545 with fast reversals, at 1548 printer |
| DARC | 14192,0 | 1424 | 05 | 10 | RUS | UiPTR | F1B | 75 | 250 | fast reversals, location Odessa |
| DARC | 14208,0 | 0823 | 18 | 10 | | UiOTHR | FMCW | | | OTH-Radar, report DL2SAS |
| DARC | 14212,0 | 1203 | 04 | 10 | RUS | UiILL | J3E-U | | | synth. female voice with "announcements" in Russian - report DL8DW |
| DARC | 14212,0 | 1220 | 11 | 10 | | UiILL | J3E-U | | | Ru language, F spelling S9+40dB - report DL1BIK |
| DARC | 14295,1 | 0819 | 07 | 10 | TJK | R.Tajikistan | A3E | | | S6-signal, "pumping" carrier |
| DARC | 20980,0 | vt | 18 | 10 | M.Ea | UiOTHR | FMCW | | | heard 1515-1545 report DG0JBJ *) |
| DARC | 20990,0 | vt | 25 | 10 | M.Ea | UiOTHR | FMCW | | | mirror of 21040 - report DG0JBJ |
| DARC | 21000,0 | vt | 25 | 10 | M.Ea | UiOTHR | FMCW | | | report DG0JBJ |
| DARC | 21000,0 | vt | 31 | 10 | M.Ea | UiOTHR | FMCW | | | heard 1035-1040 - report DG0JBJ |
| DARC | 21000,0 | vt | vd | 10 | RUS | UiPTR | F1B | 100 | 150 | vocoder YAKTHA with |

| CLUB | kHz | UTC | DD | MM | ITU | Call Sign | MODE | BD | SH | Remarks and Comments |
|-------------|---------|------|-----|----|------|-------------|------|----|----|---|
| | | | | | | | | | | inband synchro - DK2OM |
| DARC | 21010,0 | vt | 16 | 10 | M.Ea | UiOTHR | FMCW | | | heard 1415-1505 report DG0JBJ |
| DARC | 21020,0 | vt | 16 | 10 | M.Ea | UiOTHR | FMCW | | | heard 1515-1520 report DG0JBJ |
| DARC | 21030,0 | vt | 14 | 10 | M.Ea | UiOTHR | FMCW | | | report DG0JBJ |
| DARC | 21040,0 | vt | 25 | 10 | M.Ea | UiOTHR | FMCW | | | report DG0JBJ |
| DARC | 21050,0 | vt | 27 | 10 | M.Ea | UiOTHR | FMCW | | | report DG0JBJ |
| DARC | 21070,0 | vt | 14 | 10 | M.Ea | UiOTHR | FMCW | | | report DG0JBJ |
| DARC | 21080,0 | vt | 18 | 10 | M.Ea | UiOTHR | FMCW | | | heard 1515-1545 report DG0JBJ |
| DARC | 21090,0 | vt | 25 | 10 | M.Ea | UiOTHR | FMCW | | | mirror of 21040 - report DG0JBJ |
| DARC | 21100,0 | vt | 14 | 10 | M.Ea | UiOTHR | FMCW | | | report DG0JBJ |
| DARC | 21130,0 | vt | 14 | 10 | M.Ea | UiOTHR | FMCW | | | report DG0JBJ |
| DARC | 21150,0 | vt | 14 | 10 | M.Ea | UiOTHR | FMCW | | | report DG0JBJ |
| DARC | 21155,0 | vt | 25 | 10 | M.Ea | UiOTHR | FMCW | | | report DG0JBJ |
| DARC | 21180,0 | vt | 17 | 10 | M.Ea | UiOTHR | FMCW | | | heard 1445-1455 report DG0JBJ |
| DARC | 21190,0 | vt | 25 | 10 | M.Ea | UiOTHR | FMCW | | | report DG0JBJ |
| DARC | 21230,0 | vt | 14 | 10 | M.Ea | UiOTHR | FMCW | | | report DG0JBJ |
| DARC | 21240,0 | vt | 26 | 10 | M.Ea | UiOTHR | FMCW | | | report DG0JBJ |
| DARC | 21245,0 | vt | 25 | 10 | M.Ea | UiOTHR | FMCW | | | report DG0JBJ |
| DARC | 21250,0 | vt | 18 | 10 | M.Ea | UiOTHR | FMCW | | | heard 1358-1430 report DG0JBJ |
| DARC | 21260,0 | vt | 25 | 10 | M.Ea | UiOTHR | FMCW | | | report DG0JBJ |
| DARC | 21280,0 | vt | 31 | 10 | M.Ea | UiOTHR | FMCW | | | heard 1215-1252 - is mirror of 21380 - report DG0JBJ |
| DARC | 21290,0 | vt | 14 | 10 | M.Ea | UiOTHR | FMCW | | | report DG0JBJ |
| DARC | 21310,0 | vt | 25 | 10 | M.Ea | UiOTHR | FMCW | | | report DG0JBJ |
| DARC | 21325,0 | vt | 17 | 10 | M.Ea | UiOTHR | FMCW | | | heard 1443-1505 report DG0JBJ |
| DARC | 21330,0 | vt | 31 | 10 | M.Ea | UiOTHR | FMCW | | | heard 1215-1252 - report DG0JBJ |
| DARC | 21350,0 | vt | 14 | 10 | M.Ea | UiOTHR | FMCW | | | report DG0JBJ |
| DARC | 21365,0 | vt | 29 | 10 | M.Ea | UiOTHR | FMCW | | | is mirror of 21415 - heard 1220-1240 - report DG0JBJ |
| DARC | 21370,0 | vt | 14 | 10 | M.Ea | UiOTHR | FMCW | | | report DG0JBJ |
| DARC | 21380,0 | vt | 31 | 10 | M.Ea | UiOTHR | FMCW | | | heard 1215-1252 - is mirror of 21380 - report DG0JBJ |
| DARC | 21385,0 | vt | 14 | 10 | M.Ea | UiOTHR | FMCW | | | report DG0JBJ |
| DARC | 21395,0 | 1209 | 03 | 10 | | UiOTHR | FMCW | | | OTH-Radar |
| DARC | 21395,0 | vt | 31 | 10 | M.Ea | UiOTHR | FMCW | | | heard 1147-1157 - report DG0JBJ |
| DARC | 21410,0 | vt | 14 | 10 | M.Ea | UiOTHR | FMCW | | | report DG0JBJ |
| DARC | 21415,0 | vt | 29 | 10 | M.Ea | UiOTHR | FMCW | | | heard 1220-1240 - report DG0JBJ |
| DARC | 21435,0 | vt | 31 | 10 | M.Ea | UiOTHR | FMCW | | | heard 0740-0812 - report DG0JBJ |
| DARC | 21440,0 | vt | 31 | 10 | M.Ea | UiOTHR | FMCW | | | heard 0657-0700 - report DG0JBJ |
| DARC | 21450,0 | 1612 | 02 | 10 | | UiBC | A3E | | | broadcast, distorted overmodulated and FM |
| DARC | 21450,0 | vt | 14 | 10 | M.Ea | UiOTHR | FMCW | | | report DG0JBJ |
| DARC | 21450,0 | vt | dly | 10 | USA | R.Free Asia | A3E | | | sked: 0300-0600 on Sundays, location Tinian Island, Marianas - earlier heard November-December 2011 |
| DARC | 21465,0 | vt | 29 | 10 | M.Ea | UiOTHR | FMCW | | | is mirror of 21415 - heard 1220-1240 - report DG0JBJ |
| DARC | 21470,0 | 1209 | 03 | 10 | G | BBC-WS | A3E | | | strong overmodulated BC with splatters down 21450 |
| DARC | 21470,0 | vt | 12 | 10 | G | BBC-WS | A3E | | | harmful splatters 21070 - |

| CLUB | kHz | UTC | DD | MM | ITU | Call Sign | MODE | BD | SH | Remarks and Comments |
|-------------|---------|------|----|----|------|---------------|------|----|----|--|
| | | | | | | | | | | 21970, heard 1600 - 1630, reporters DL5RDP, DB3QK, DL7HU |
| DARC | 28005,0 | vt | vd | 10 | | Driftnet Buoy | A1A | | | DK2OM, DJ7KG, G3YBT, SV1ATJ, WJ5O sent 114 reports to DARC-MS concerning driftnet buoys in the range 28005 - 28451. See www.iarums-r1.org/iarums/buoys.pdf |
| DARC | 28030,0 | vt | 14 | 10 | M.Ea | UiOTHR | FMCW | | | heard 1105-1115 - report DG0JBJ |
| DARC | 28045,0 | vt | 15 | 10 | M.Ea | UiOTHR | FMCW | | | heard 1420-1435, report DG0JBJ |
| DARC | 28100,0 | vt | 26 | 10 | M.Ea | UiOTHR | FMCW | | | report DG0JBJ |
| DARC | 28120,0 | vt | 29 | 10 | M.Ea | UiOTHR | FMCW | | | report DG0JBJ |
| DARC | 28130,0 | vt | 27 | 10 | M.Ea | UiOTHR | FMCW | | | report DG0JBJ |
| DARC | 28145,0 | 1214 | 06 | 10 | M.Ea | UiTaxi | F3E | | | Russian Taxi, report DG0JBJ |
| DARC | 28155,0 | 1219 | 06 | 10 | M.Ea | UiTaxi | F3E | | | Russian Taxi, report DG0JBJ |
| DARC | 28165,0 | 0925 | 06 | 10 | M.Ea | UiTaxi | F3E | | | Russian Taxi, report DG0JBJ |
| DARC | 28180,0 | vt | 14 | 10 | M.Ea | UiOTHR | FMCW | | | report DG0JBJ |
| DARC | 28190,0 | vt | 10 | 10 | M.Ea | UiOTHR | FMCW | | | heard 1035-1100, report DG0JBJ |
| DARC | 28200,0 | vt | 12 | 10 | M.Ea | UiOTHR | FMCW | | | report DG0JBJ |
| DARC | 28210,0 | vt | 27 | 10 | M.Ea | UiOTHR | FMCW | | | report DG0JBJ |
| DARC | 28215,0 | vt | 29 | 10 | M.Ea | UiOTHR | FMCW | | | report DG0JBJ |
| DARC | 28225,0 | 1208 | 06 | 10 | M.Ea | UiTaxi | F3E | | | Russian Taxi, report DG0JBJ |
| DARC | 28300,0 | vt | 14 | 10 | M.Ea | UiOTHR | FMCW | | | report DG0JBJ |
| DARC | 28390,0 | vt | 25 | 10 | M.Ea | UiOTHR | FMCW | | | report DG0JBJ |
| DARC | 28400,0 | vt | 12 | 10 | M.Ea | UiOTHR | FMCW | | | report DG0JBJ |
| DARC | 28500,0 | vt | 10 | 10 | M.Ea | UiOTHR | FMCW | | | heard 1125-1130, report DG0JBJ |
| DARC | 28550,0 | 0927 | 06 | 10 | M.Ea | UiOTHR | FMCW | | | report DG0JBJ |
| DARC | 28590,0 | vt | 14 | 10 | M.Ea | UiOTHR | FMCW | | | report DG0JBJ |
| DARC | 28620,0 | vt | 08 | 10 | M.Ea | UiOTHR | FMCW | | | heard 1350-1355, 1455-1717 - report DG0JBJ |
| DARC | 28630,0 | vt | 29 | 10 | M.Ea | UiOTHR | FMCW | | | report DG0JBJ |
| DARC | 28640,0 | vt | 31 | 10 | M.Ea | UiOTHR | FMCW | | | report DG0JBJ |
| DARC | 28650,0 | vt | 31 | 10 | M.Ea | UiOTHR | FMCW | | | report DG0JBJ |
| DARC | 28700,0 | vt | 31 | 10 | M.Ea | UiOTHR | FMCW | | | report DG0JBJ |
| DARC | 28720,0 | vt | 31 | 10 | M.Ea | UiOTHR | FMCW | | | report DG0JBJ |
| DARC | 28760,0 | vt | 14 | 10 | M.Ea | UiOTHR | FMCW | | | report DG0JBJ |
| DARC | 28800,0 | vt | 31 | 10 | M.Ea | UiOTHR | FMCW | | | report DG0JBJ |
| DARC | 28830,0 | vt | 29 | 10 | M.Ea | UiOTHR | FMCW | | | report DG0JBJ |
| DARC | 28865,0 | 1320 | 06 | 10 | M.Ea | UiTaxi | F3E | | | Russian Taxi, report DG0JBJ |
| DARC | 28870,0 | vt | 14 | 10 | M.Ea | UiOTHR | FMCW | | | report DG0JBJ |
| DARC | 28900,0 | vt | 14 | 10 | M.Ea | UiOTHR | FMCW | | | report DG0JBJ |
| DARC | 28900,0 | vt | 14 | 10 | M.Ea | UiOTHR | FMCW | | | report DG0JBJ |
| DARC | 28920,0 | vt | 12 | 10 | M.Ea | UiOTHR | FMCW | | | report DG0JBJ |
| DARC | 28930,0 | vt | 12 | 10 | M.Ea | UiOTHR | FMCW | | | report DG0JBJ |
| DARC | 28970,0 | vt | 14 | 10 | M.Ea | UiOTHR | FMCW | | | is mirror of 29020, report DG0JBJ |
| DARC | 28975,0 | 1330 | 06 | 10 | M.Ea | UiTaxi | F3E | | | Russian Taxi, report DG0JBJ |
| DARC | 28980,0 | vt | 16 | 10 | M.Ea | UiOTHR | FMCW | | | heard 1030-1120 report DG0JBJ |
| DARC | 28990,0 | vt | 14 | 10 | M.Ea | UiOTHR | FMCW | | | is mirror of 29040, report DG0JBJ |
| DARC | 28995,0 | vt | 15 | 10 | M.Ea | UiOTHR | FMCW | | | heard 1420-1435 report DG0JBJ |
| DARC | 29000,0 | vt | 24 | 10 | M.Ea | UiOTHR | FMCW | | | report DG0JBJ |
| DARC | 29000,0 | vt | 29 | 10 | M.Ea | UiOTHR | FMCW | | | is mirror of 29050 - report |

| CLUB | kHz | UTC | DD | MM | ITU | Call Sign | MODE | BD | SH | Remarks and Comments |
|-------------|---------|-----|-----|----|------|----------------|------|----|----|---|
| | | | | | | | | | | DG0JBJ |
| DARC | 29010,0 | vt | 09 | 10 | M.Ea | UiOTHR | FMCW | | | heard 0810-0840, is mirror of 29060, report DG0JBJ |
| DARC | 29020,0 | vt | 14 | 10 | M.Ea | UiOTHR | FMCW | | | report DG0JBJ |
| DARC | 29030,0 | vt | 16 | 10 | M.Ea | UiOTHR | FMCW | | | heard 1030-1120 report DG0JBJ |
| DARC | 29040,0 | vt | 09 | 10 | M.Ea | UiOTHR | FMCW | | | heard 0725-0742, report DG0JBJ |
| DARC | 29045,0 | vt | 15 | 10 | M.Ea | UiOTHR | FMCW | | | heard 1420-1435 report DG0JBJ |
| DARC | 29050,0 | vt | 16 | 10 | M.Ea | UiOTHR | FMCW | | | heard 1245-1325 report DG0JBJ |
| DARC | 29060,0 | vt | 09 | 10 | M.Ea | UiOTHR | FMCW | | | heard 0810-0840, report DG0JBJ |
| DARC | 29070,0 | vt | 12 | 10 | M.Ea | UiOTHR | FMCW | | | is mirror of 29120, report DG0JBJ |
| DARC | 29080,0 | vt | 31 | 10 | M.Ea | UiOTHR | FMCW | | | report DG0JBJ |
| DARC | 29090,0 | vt | 09 | 10 | M.Ea | UiOTHR | FMCW | | | heard 0725-0742, is "mirror" of 29040,report DG0JBJ |
| DARC | 29090,0 | vt | dly | 10 | B | BC Rio Rio Mar | A3E | | | sked: 0930-2200 |
| DARC | 29100,0 | vt | 14 | 10 | M.Ea | UiOTHR | FMCW | | | report DG0JBJ |
| DARC | 29100,0 | vt | 31 | 10 | M.Ea | UiOTHR | FMCW | | | report DG0JBJ |
| DARC | 29110,0 | vt | 09 | 10 | M.Ea | UiOTHR | FMCW | | | heard 0810-0840, is mirror of 29060, report DG0JBJ |
| DARC | 29115,0 | vt | 27 | 10 | M.Ea | UiOTHR | FMCW | | | report DG0JBJ |
| DARC | 29120,0 | vt | 29 | 10 | M.Ea | UiOTHR | FMCW | | | is mirror of 29170 - report DG0JBJ |
| DARC | 29130,0 | vt | 29 | 10 | M.Ea | UiOTHR | FMCW | | | mirror of 29180 - report DG0JBJ |
| DARC | 29150,0 | vt | 26 | 10 | M.Ea | UiOTHR | FMCW | | | report DG0JBJ |
| DARC | 29170,0 | vt | 29 | 10 | M.Ea | UiOTHR | FMCW | | | report DG0JBJ |
| DARC | 29180,0 | vt | 29 | 10 | M.Ea | UiOTHR | FMCW | | | report DG0JBJ |
| DARC | 29220,0 | vt | 29 | 10 | M.Ea | UiOTHR | FMCW | | | is mirror of 29170 - report DG0JBJ |
| DARC | 29230,0 | vt | 29 | 10 | M.Ea | UiOTHR | FMCW | | | mirror of 29180 - report DG0JBJ |
| DARC | 29270,0 | vt | 25 | 10 | M.Ea | UiOTHR | FMCW | | | report DG0JBJ |
| DARC | 29280,0 | vt | 27 | 10 | M.Ea | UiOTHR | FMCW | | | report DG0JBJ |
| DARC | 29300,0 | vt | 14 | 10 | M.Ea | UiOTHR | FMCW | | | report DG0JBJ |
| DARC | 29330,0 | vt | 29 | 10 | M.Ea | UiOTHR | FMCW | | | is mirror of 29380 - report DG0JBJ |
| DARC | 29360,0 | vt | 11 | 10 | M.Ea | UiOTHR | FMCW | | | heard 0900-0930, 1215-1240 - report DG0JBJ |
| DARC | 29380,0 | vt | 29 | 10 | M.Ea | UiOTHR | FMCW | | | report DG0JBJ |
| DARC | 29430,0 | vt | vt | 10 | M.Ea | UiOTHR | FMCW | | | mirror of 29480 - report DG0JBJ |
| DARC | 29450,0 | vt | 16 | 10 | M.Ea | UiOTHR | FMCW | | | heard 1440-1445 report DG0JBJ |
| DARC | 29480,0 | vt | 29 | 10 | M.Ea | UiOTHR | FMCW | | | report DG0JBJ |
| DARC | 29490,0 | vt | 25 | 10 | M.Ea | UiOTHR | FMCW | | | report DG0JBJ |
| DARC | 29500,0 | vt | 16 | 10 | M.Ea | UiOTHR | FMCW | | | heard 1440-1445 report DG0JBJ |
| DARC | 29530,0 | vt | 14 | 10 | M.Ea | UiOTHR | FMCW | | | report DG0JBJ |
| DARC | 29530,0 | vt | 29 | 10 | M.Ea | UiOTHR | FMCW | | | is mirror of 29480 - report DG0JBJ |
| DARC | 29539,0 | vt | vt | 10 | M.Ea | UiOTHR | FMCW | | | mirror of 29480 - report DG0JBJ |
| DARC | 29550,0 | vt | 16 | 10 | M.Ea | UiOTHR | FMCW | | | heard 1440-1445 report DG0JBJ |
| DARC | 29560,0 | vt | 14 | 10 | M.Ea | UiOTHR | FMCW | | | report DG0JBJ |
| DARC | 29560,0 | vt | 16 | 10 | M.Ea | UiOTHR | FMCW | | | heard 1335-1340 report DG0JBJ |
| DARC | 29570,0 | vt | 22 | 10 | M.Ea | UiOTHR | FMCW | | | mirror of 29620 - report DG0JBJ |

| CLUB | kHz | UTC | DD | MM | ITU | Call Sign | MODE | BD | SH | Remarks and Comments |
|------|--------------|-----|----|----|------|-----------|------|----|------|--|
| DARC | 29610,0 | vt | 12 | 10 | M.Ea | UiOTHR | FMCW | | | report DG0JBJ |
| DARC | 29615,0 | vt | 26 | 10 | M.Ea | UiOTHR | FMCW | | | report DG0JBJ |
| DARC | 29620,0 | vt | 22 | 10 | M.Ea | UiOTHR | FMCW | | | report DG0JBJ |
| DARC | 29630,0 | vt | 26 | 10 | M.Ea | UiOTHR | FMCW | | | report DG0JBJ |
| DARC | 29640,0 | vt | 12 | 10 | M.Ea | UiOTHR | FMCW | | | report DG0JBJ |
| DARC | 29660,0 | vt | 16 | 10 | M.Ea | UiOTHR | FMCW | | | heard 1335-1340 report DG0JBJ |
| DARC | 29670,0 | vt | 22 | 10 | M.Ea | UiOTHR | FMCW | | | mirror of 29620 - report DG0JBJ *) |
| DARC | 29670 - NOTE | vt | vt | 10 | M.Ea | UiOTHR | FMCW | !! | !!!! | *) Mario DG0JBJ during October has sent daily 24-hour-screenshots from 10 meter band. Uli DJ9KR has evaluated these and noted all OTH-Radars visible on the screenshots. There are 126 reports for the 10-m-band. Tnx, dear Mario! Keep up your good work! |

DARC 2 – Germany - DK2OM (Wolf)

PSE observe:

FSK transmissions -> center frequency between mark and space

PSK transmissions -> center frequency

ALE (MIL188-141A) -> USB frequency – exclusive bands: black – shared bands: blue

voice traffic -> green

SH = shift --- SP = spread (radar) – SPS = sweeps/sec (radar)

| DK2OM | kHz | UTC | DD | MM | ITU | IDENT | MODE | BD | SH/SP | DETAILS |
|-------|--------|------|-----|----|-----|--------|------|------|-------|---|
| DK2OM | 1812,0 | vt | vd | 10 | POL | | A3E | | | Polish “PIP” – 10 tones – navigation system - North-Poland – Baltic coast - POL Navy – legal operation (ITU footnote) |
| DK2OM | 1876,8 | ady | dly | 10 | G | | PSK8 | 2400 | 2400 | Stanag4285 - 1200 bps long - Scotland (legal) |
| DK2OM | 1881,4 | ady | dly | 10 | F | | QPSK | 100 | 100 | BC-PSK – Radio Navigation – Nantes – France (legal) |
| DK2OM | 1896,5 | ady | dly | 10 | D | | PSK8 | 2400 | 2400 | Stanag4285 - 600 bps long - German Navy (legal) |
| DK2OM | 3500,0 | vt | dly | 10 | TUR | no ITU | FSK8 | 125 | 1750 | ALE, “2015” “2016” “1020” “3010”- Turkish Red Crescent - legal |
| DK2OM | 3500,0 | 1643 | 02 | 10 | HOL | | USB | | | Dutch fishery |
| DK2OM | 3500,5 | 2204 | 27 | 10 | RUS | | F1B | 75 | 200 | Moscow |
| DK2OM | 3500,6 | 2215 | 25 | 10 | CIS | | A3E | | | CIS pirates – unstable carrier |
| DK2OM | 3503,0 | 1932 | 20 | 10 | | | | | | frequency hopper |
| DK2OM | 3503,0 | 1914 | 20 | 10 | RUS | | F1B | 75 | 200 | area of Moscow |
| DK2OM | 3503,2 | 1952 | 01 | 10 | CIS | | A3E | | | CIS pirates – unstable carrier |
| DK2OM | 3503,5 | vt | dly | 10 | G | no ITU | FSK8 | 125 | 1750 | ALE – “XSS” “XPU” – British MIL Tascomm |
| DK2OM | 3510,0 | vt | dly | 10 | ALG | no ITU | FSK8 | 125 | 1750 | ALE, “JE30” “PT30” |
| DK2OM | 3512,0 | 1942 | 18 | 10 | UKR | | PSK2 | 120 | 2600 | AT3004D – south-west of Kiev |
| DK2OM | 3514,9 | 2224 | 16 | 10 | CIS | | A3E | | | CIS pirates – unstable carrier |
| DK2OM | 3520,0 | 1641 | 14 | 10 | E | | USB | | | Spanish fishery |
| DK2OM | 3525,0 | 1550 | 25 | 10 | HOL | | USB | | | Dutch fishery |
| DK2OM | 3527,0 | 2200 | 12 | 10 | RUS | | F1B | 50 | 200 | Severomorsk |
| DK2OM | 3532,0 | vt | dly | 10 | ALG | no ITU | FSK8 | 125 | 1750 | ALE, “UN3” “VQ30” |
| DK2OM | 3533,0 | vt | dly | 10 | E | no ITU | FSK8 | 125 | 1750 | ALE, “TYBB1” “TYVCI” “TCS” “TYVV1” - Spanish Guardia Civil |
| DK2OM | 3533,8 | 1827 | 17 | 10 | F | | PSK4 | 75 | 2300 | Link11-CLEW – west of Brest |
| DK2OM | 3535,0 | 0637 | 07 | 10 | G | | USB | | | UK fishery |
| DK2OM | 3535,0 | 1532 | 12 | 10 | F | | USB | | | French fishery |

| DK2OM | kHz | UTC | DD | MM | ITU | IDENT | MODE | BD | SH/SP | DETAILS |
|-------|--------|------|-----|----|-------|--------|--------|------|-------|--|
| DK2OM | 3535,0 | 2010 | 14 | 10 | E | | USB | | | Spanish fishery |
| DK2OM | 3536,6 | 1943 | 14 | 10 | ISR | | PSK4 | 75 | 2600 | MIL188-110A hybrid modem |
| DK2OM | 3540,0 | 1823 | 06 | 10 | E | | USB | | | Spanish fishery with vocoder CRY2001 |
| DK2OM | 3540,0 | 1926 | 09 | 10 | HOL | | USB | | | Dutch fishery |
| DK2OM | 3540,0 | 1750 | 29 | 10 | UKR | | PSK2 | 120 | 2600 | AT3004D - Odessa |
| DK2OM | 3545,0 | vt | dly | 10 | ALG | no ITU | FSK8 | 125 | 1750 | ALE, "FL49" "FL57" "PT50" - ALG MIL + voice traffic USB and scrambler |
| DK2OM | 3546,0 | 1754 | 05 | 10 | RUS | | PSK2 | 120 | 2600 | AT3004D - Moscow |
| DK2OM | 3546,0 | 2000 | 10 | 10 | RUS | | PSK4 | 120 | 2600 | AT3104D – area of Moscow |
| DK2OM | 3548,0 | 1740 | 21 | 10 | RUS | | F1B | 50 | 200 | Kaliningrad |
| DK2OM | 3550,0 | 0630 | dly | 10 | F | | A3E | | | French amateurs not respecting bandplans |
| DK2OM | 3550,0 | 1937 | 03 | 10 | RUS | | PSK2 | 120 | 2600 | AT3004D – Russin ship, Black Sea |
| DK2OM | 3550,8 | 1733 | 04 | 10 | ISR | | PSK4 | 75 | 2600 | MIL188-110A hybrid modem |
| DK2OM | 3552,0 | 1902 | 02 | 10 | RUS | | F1B | 50 | 250 | Severomorsk |
| DK2OM | 3553,8 | ady | dly | 10 | TUR | | PSK8 | 2400 | 2400 | Stanag4285 – TUR MIL - Ankara |
| DK2OM | 3558,0 | vt | dly | 10 | | | FSK8 | 125 | 1750 | ALE, "403" |
| DK2OM | 3560,0 | 0945 | 09 | 10 | HOL | | USB | | | Dutch ship area of Dundee - Scotland |
| DK2OM | 3567,5 | 1727 | 03 | 10 | RUS | | PSK2 | 120 | 2600 | AT3004D - Kaliningrad |
| DK2OM | 3570,0 | 1850 | 15 | 10 | RUS | | PSK2 | 120 | 2600 | AT3004D – submode idle - Kaliningrad |
| DK2OM | 3570,0 | 1833 | 18 | 10 | Scand | | USB | | | Scandinavians, also on 21.10.12 at 0656 utc |
| DK2OM | 3585,0 | 1700 | dly | 10 | TWN | HLL | F1C | | | 120 rpm, IOC 576, Wxfax - legal! |
| DK2OM | 3585,0 | 1914 | 26 | 10 | I | | USB | | | Italian pirates |
| DK2OM | 3585,0 | 1638 | 27 | 10 | | | USB | | | Scandinavians |
| DK2OM | 3586,0 | 1940 | 24 | 10 | G | | PSK2 | 40 | 40 | unknown transmission - daily |
| DK2OM | 3587,0 | vt | dly | 10 | E | no ITU | FSK8 | 125 | 1750 | ALE, "TVV" "TXX" - Spanish Guardia Civil |
| DK2OM | 3588,0 | 1858 | 07 | 10 | RUS | | PSK2 | 120 | 2600 | AT3004D - Moscow |
| DK2OM | 3590,0 | vt | dly | 10 | PAK | no ITU | FSK8 | 125 | 1750 | ALE, "KW" "ZULFIQUARI" "KHAIBAR" "SAIFI" "NRS"- Pakistan Navy |
| DK2OM | 3595,0 | vt | dly | 10 | D | no ITU | FSK8 | 125 | 1750 | ALE, „ZLST“ „ZPRI“ „ZSHO“ „ZBOR“ „ZEMD“ „ZHEL“ „ZKNI“ „ZBOR“ „BPLEZS“ German customs – North-Germany |
| DK2OM | 3595,0 | 0630 | 08 | 10 | | | USB | | | man in Russian voice |
| DK2OM | 3595,7 | 2155 | 12 | 10 | ISR | | PSK4 | 75 | 2600 | MIL188-110A hybrid modem |
| DK2OM | 3596,0 | vt | dly | 10 | HRV | 9A0ALE | FSK8 | 125 | 1750 | Croatian emergency ALE-net --- for info! |
| DK2OM | 3596,8 | 2155 | 12 | 10 | | | PSK8 | 2400 | 2400 | Link11 - SLEW |
| DK2OM | 3600,0 | 1640 | 14 | 10 | F | | A3E | | | French amateurs in A3E |
| DK2OM | 3601,0 | vt | vd | 10 | D | DA0EC | PSK8 | 2000 | 2000 | RFSM 8000 – amateur emergency net - Berlin - legal operation - just for info!!! |
| DK2OM | 3602,5 | vt | dly | 10 | AUT | OE9XRK | PSK2/4 | 1800 | 1800 | Pactor4 – Mailbox OE9XRK – just for info! |
| DK2OM | 3603,0 | vt | dly | 10 | ALG | no ITU | FSK8 | 125 | 1750 | ALE, "PT01JL94" "JL05JL94" |
| DK2OM | 3608,0 | 1947 | 16 | 10 | RUS | | F1B | 50 | 200 | Kaliningrad |
| DK2OM | 3610,0 | vt | dly | 10 | D | | PSK8 | 200 | 500 | German APRS Net in Robust Packet - just for info! |
| DK2OM | 3617,0 | vt | dly | 10 | HRV | 9A5EX | FSK8 | 125 | 1750 | ALE, "9A5EX1P" – HAM-ALE - just for info |
| DK2OM | 3622,5 | 1800 | dly | 10 | J | JMH | F1C | | | Tokyo Meteo – 120 rpm – IOC576 – daily, legal!!! |
| DK2OM | 3626,0 | vt | dly | 10 | HRV | 9A5EX | FSK8 | 125 | 1750 | ALE, "9A5EX" – just for info |
| DK2OM | 3650,0 | vt | dly | 10 | | | FSK8 | 125 | 1750 | ALE, "EH34" "FN3" |
| DK2OM | 3660,0 | vt | dly | 10 | ALG | no ITU | FSK8 | 125 | 1750 | ALE, "UN20" XT20" - Algerian MIL |
| DK2OM | 3733,0 | 2206 | 15 | 10 | RUS | | F1B | 75 | 250 | Kaliningrad |

| DK2OM | kHz | UTC | DD | MM | ITU | IDENT | MODE | BD | SH/SP | DETAILS |
|-------|--------|------|-----|----|-----|-----------|---------|------|---------|--|
| DK2OM | 3751,5 | vt | dly | 10 | POL | | FSK8 | 125 | 1750 | ALE, "LA7" "MI3" |
| DK2OM | 3756,0 | ady | dly | 10 | UKR | | A3E | | | UKR – pip – 10 tones – navigation system |
| DK2OM | 3761,5 | vt | dly | 10 | POL | no ITU | FSK8 | 125 | 1750 | ALE, "NI9" "AB2" – Polish military |
| DK2OM | 3772,8 | ady | dly | 10 | BEL | | PSK8 | 2400 | 2400 | Stanag4285 – 600 bps long – Antwerpen - daily |
| DK2OM | 3782,0 | ady | dly | 10 | POR | CTP | F1B | 75 | 850 | POR Navy headquarter Lisbon |
| DK2OM | 7000,0 | ady | dly | 10 | INS | | U/LSB | | | Indonesian pirates in USB and LSB – every evening audible in Europe – at 1000 utc audible in West Canada |
| DK2OM | 7000,0 | 0705 | 24 | 10 | I | | USB | | | Italian pirates |
| DK2OM | 7000,0 | 1700 | 25 | 10 | F | | FMCW | | 20k | French burst radar, 6 sps, similar Codar, South France – same as 14000 - every 15 min. |
| DK2OM | 7001,5 | 1927 | 21 | 10 | ALG | | PSK4 | 62.5 | 1750 | Clover2000 – South Algeria |
| DK2OM | 7010,0 | 0940 | 09 | 10 | RUS | | PSK2 | 120 | 2600 | AT3004D - Moscow |
| DK2OM | 7010,0 | 1626 | 28 | 10 | CHN | | FMCW | | | Chinese OTH radar – 43.5 sps – 6760 – 7010 kHz |
| DK2OM | 7016,0 | 0600 | 04 | 10 | RUS | | F1B | 75 | 250 | Kaliningrad |
| DK2OM | 7018,0 | 2145 | 12 | 10 | RUS | | PSK2 | 120 | 2600 | AT3004D – submode idle - Moscow |
| DK2OM | 7020,0 | 1657 | 30 | 10 | FEa | Lima Zero | LSB/USB | | | Far East net in Italian and Indonesian language, not audible in Europe – only via remote Japan, Australia and California (USA) and South Africa – daily! |
| DK2OM | 7027,0 | 0952 | 15 | 10 | RUS | | PSK4 | 120 | 2600 | AT3104D - Kaliningrad |
| DK2OM | 7030,0 | 1743 | 30 | 10 | RUS | | F1B | 75 | 250 | area of Nizhniy Novgorod |
| DK2OM | 7038,7 | ady | dly | 10 | UKR | D | A1A | | | Cluster beacon – Sevastopol RUS Navy – "RCV" |
| DK2OM | 7038,8 | ady | dly | 10 | RUS | P | A1A | | | Cluster beacon – Kaliningrad RUS Navy – "RMP" |
| DK2OM | 7038,9 | ady | dly | 10 | RUS | S | A1A | | | Cluster beacon – Severomorsk RUS Navy – „RIT“ |
| DK2OM | 7039,0 | ady | dly | 10 | RUS | C | A1A | | | Cluster beacon - Moscow RUS Navy - "RIW" |
| DK2OM | 7039,1 | vt | dly | 10 | KGZ | A | A1A | | | Cluster beacon – Bishkek RUS Navy – "RJH25" |
| DK2OM | 7039,2 | ady | dly | 10 | RUS | F | A1A | | | Cluster beacon - Vladivostok RUS Navy - "RJS" |
| DK2OM | 7039,3 | vt | dly | 10 | RUS | K | A1A | | | Cluster beacon - Petropavlovsk Kamchatskiy - RUS Navy - Pacific fleet - "RCC" |
| DK2OM | 7039,4 | vt | dly | 10 | RUS | M | A1A | | | Cluster beacon – Magadan RUS Navy – „RTS“ |
| DK2OM | 7040,0 | vt | dly | 10 | F | F6BAZ | FSK8 | 125 | 1750 | ALE, "F6BAZ" – just for info |
| DK2OM | 7040,5 | vt | dly | 10 | HRV | 9A5EX | FSK8 | 125 | 1750 | ALE, "9A5EX" - just for info! |
| DK2OM | 7047,0 | 2150 | 12 | 10 | RUS | | PSK2 | 120 | 2600 | AT3004D - Krasnodar |
| DK2OM | 7049,0 | 1848 | 29 | 10 | RUS | | F1B | 75 | 200 | ship Baltic Sea |
| DK2OM | 7049,5 | vt | dly | 10 | F | F4BXW1 | FSK8 | 125 | 1750 | ALE, "F4BXW1" - just for info! |
| DK2OM | 7052,0 | 1838 | 25 | 10 | CHN | | FMCW | | 10k | Chinese OTH Radar – 66.66 sps – 7.6 sec bursts – vy strong in Germany – jumping to 7158 and down |
| DK2OM | 7054,0 | vt | dly | 10 | RUS | | F1B | 50 | 100/200 | RUS Navy - Moscow |
| DK2OM | 7059,0 | 0725 | 27 | 10 | RUS | | F1B | 75 | 250 | Moscow – also: 31.10.12 at 0700 utc |
| DK2OM | 7065,0 | vt | dly | 10 | HRV | 9A5EX | FSK8 | 125 | 1750 | ALE, "9A5EX" - just for info! |
| DK2OM | 7073,0 | 1409 | 08 | 10 | RUS | | PSK2 | 120 | 2600 | AT3004D – submode idle – ship north of Gdansk |
| DK2OM | 7089,8 | 1748 | 15 | 10 | TUR | | PSK8 | 2400 | 2400 | Link11 - SLEW – aircraft – Turkish south coast – daily, various times |
| DK2OM | 7099,5 | vt | dly | 10 | HRV | 9A0ZG | FSK8 | 125 | 1750 | ALE, "9A0ZG" - just for info |

| DK2OM | kHz | UTC | DD | MM | ITU | IDENT | MODE | BD | SH/SP | DETAILS |
|-------|---------|------|-----|----|-----|--------|------|------|--------------|---|
| DK2OM | 7102,0 | vt | dly | 10 | HRV | 9A3COL | FSK8 | 125 | 1750 | ALE, "9A3COL" – just for info! |
| DK2OM | 7102,0 | vt | dly | 10 | SUI | | FSK8 | 125 | 1750 | ALE, "HB9MHB" – just for info! |
| DK2OM | 7110,5 | vt | dly | 10 | HRV | 9A0ALE | FSK8 | 125 | 1750 | ALE, amateur net, just for info! |
| DK2OM | 7111,0 | 1019 | 01 | 10 | RUS | | F1B | 75 | 250 | east of Kazan |
| DK2OM | 7111,0 | 0556 | 15 | 10 | RUS | | F1B | 50 | 250 | Kaliningrad |
| DK2OM | 7117,0 | vt | dly | 10 | RUS | REA4 | F1B | 100 | 500/ 1000 | most of the time idle – Russian airforce Moscow – daily, all day – even audible in Japan and Australia --- now on 7018.0 kHz |
| DK2OM | 7117,5 | 2043 | 31 | 10 | RUS | REA4 | A1A | | | ident in A1A utc - "REA4" = RUS airforce Moscow - 7117.5 = mark QRG! |
| DK2OM | 7122,0 | 0757 | 13 | 10 | RUS | | F1B | 75 | 200 | Volgograd |
| DK2OM | 7122,0 | 2156 | 13 | 10 | CHN | | FMCW | | 10k | Chinese OTH Radar – 66.66 sps – 3.8 sec bursts – audible in Germany |
| DK2OM | 7152,0 | 1742 | 04 | 10 | CHN | | FMCW | | 10k | Chinese OTH Radar – 66.66 sps – 11.5 sec bursts – audible in Germany |
| DK2OM | 7155,0 | 1746 | 04 | 10 | CHN | | FMCW | | 10k | Chinese OTH Radar – 66.66 sps – 7.7 sec bursts – audible in Germany |
| DK2OM | 7158,0 | 1130 | 01 | 10 | RUS | | PSK2 | 120 | 2600 | AT3004D – submode idle – far east Russia |
| DK2OM | 7158,0 | 1840 | 25 | 10 | CHN | | FMCW | | 10k | Chinese OTH Radar – 66.66 sps – 7.6 sec bursts – vy strong in Germany |
| DK2OM | 7162,0 | 1526 | 12 | 10 | RUS | | F1B | 75 | 250 | Kaliningrad – also: 30.10.12 at 1818 utc |
| DK2OM | 7169,0 | 0614 | 11 | 10 | RUS | | F1B | 75 | 250 | Kaliningrad |
| DK2OM | 7171,0 | 0650 | 08 | 10 | RUS | | PSK2 | 120 | 2600 | AT3004D - Kaliningrad |
| DK2OM | 7176,0 | 0758 | 13 | 10 | RUS | | F1B | 75 | 250 | Kaliningrad |
| DK2OM | 7178,0 | 1630 | 16 | 10 | RUS | | PSK2 | 120 | 2600 | AT3004D - Orenburg |
| DK2OM | 7180,0 | vt | dly | 10 | MRC | no ITU | FSK8 | 125 | 1750 | ALE, "9201" "6350" "RC1" |
| DK2OM | 7185,5 | vt | dly | 10 | F | F4BXW | FSK8 | 125 | 1750 | ALE, "F4BXW" - just for info! |
| DK2OM | 7190,0 | 1937 | 17 | 10 | RUS | | PSK2 | 120 | 2600 | AT3004D - modem idle - Moscow |
| DK2OM | 7192,5 | 1520 | 07 | 10 | RUS | | PSK4 | 120 | 2600 | AT3104D - Severomorsk |
| DK2OM | 7198,0 | 1212 | 09 | 10 | RUS | | PSK2 | 120 | 2600 | AT3004D - Kaliningrad |
| DK2OM | 7197,0 | 1825 | dly | 10 | RUS | | PSK2 | 64 | 3000 | contains several PSK2 channels with 64 Bd and 64 Hz shift – 7197 – 7200 kHz – together with VOR on 7215 kHz |
| DK2OM | 10101,0 | 2150 | 06 | 10 | INS | | USB | | | Indonesian pirates |
| DK2OM | 10101,0 | 2214 | 06 | 10 | | | | | | frequency hopper |
| DK2OM | 10106,0 | vt | dly | 10 | ALG | no ITU | FSK8 | 125 | 1750 | ALE, "OG100A" "OR200B" - Algerian MIL |
| DK2OM | 10110,0 | vt | vd | 10 | SNG | | FSK8 | 125 | 1750 | ALE, "CN6" "68" – Singapore Navy - Changi Naval Base with frigate "RSS Formidable" |
| DK2OM | 10112,0 | ady | dly | 10 | TUR | | PSK8 | 2400 | 2400 | Stanag4285 – 600 bps long – TUR MIL - Izmir |
| DK2OM | 10112,6 | 1325 | 03 | 10 | | | A1A | | | encrypted CW |
| DK2OM | 10115,0 | vt | dly | 10 | | no ITU | FSK8 | 125 | 1750 | ALE, "2001", "2011" "2005" |
| DK2OM | 10115,6 | 2212 | 08 | 10 | RUS | | A1A | | | 10115.560 - encrypted CW - Orenburg |
| DK2OM | 10120,0 | 2130 | 06 | 10 | | no ITU | FSK8 | 125 | 1750 | ALE-LSB, "5001" |
| DK2OM | 10120,0 | vt | dly | 10 | | no ITU | FSK8 | 125 | 1750 | ALE, "8001" "9067" |
| DK2OM | 10121,0 | 1327 | 03 | 10 | RUS | | F1B | 75 | 250 | area of Smolensk |
| DK2OM | 10121,4 | 1520 | 12 | 10 | E | | USB | | | Spanish fishery |
| DK2OM | 10123,0 | 0738 | 29 | 10 | RUS | | F1B | 75 | 200 | Kaliningrad |
| DK2OM | 10130,0 | vt | vd | 10 | | | FSK8 | 125 | 1750 | Thales 3000 |
| DK2OM | 10130,0 | 1631 | 21 | 10 | | | FSK8 | 125 | 1750 | ALE, "DL5" "084" |
| DK2OM | 10130,0 | vt | dly | 10 | USA | | F1B | 50 | 850 | USA - Maine |
| DK2OM | 10131,0 | 1620 | 26 | 10 | RUS | | F1B | 75 | 250 | Central Russia |
| DK2OM | 10134,0 | vt | dly | 10 | ALG | no ITU | FSK8 | 125 | 1750 | ALE, "CM4" "COF" - Algerian Airforce |
| DK2OM | 10135,0 | 1830 | 28 | 10 | CYP | | FMCW | | 20k | OTH Radar Cyprus – 50 sps – |

| DK2OM | kHz | UTC | DD | MM | ITU | IDENT | MODE | BD | SH/SP | DETAILS |
|-------|----------------|-------------|-----------|-----------|----------|--------|-------------|------|------------|--|
| | | | | | | | | | | even strong in Japan |
| DK2OM | 10136,5 | vt | dly | 10 | F | F4BXW | FSK8 | 125 | 1750 | ALE, "F4BXW" - just for info! |
| DK2OM | 10142,5 | vt | dly | 10 | HRV | 9A5EX | FSK8 | 125 | 1750 | ALE, "9A5EX" - just for info! |
| DK2OM | 10145,0 | 1905 | 20 | 10 | CYP | | FMCW | | 20k | OTH Radar Cyprus - 50 sps |
| DK2OM | 10145,5 | 1702 | 22 | 10 | SUI | | FSK8 | 125 | 1750 | ALE, "HB9MHB" - just for info! |
| DK2OM | 10145,5 | vt | dly | 10 | HRV | 9A5EX | FSK8 | 125 | 1750 | ALE, 9A5EX, just for info! |
| DK2OM | 10146,0 | vt | dly | 10 | ALG | | FSK8 | 125 | 1750 | ALE, "ORG" "CM4" - ALG Airforce |
| DK2OM | 10150,0 | vt | dly | 10 | | no ITU | FSK8 | 125 | 1750 | ALE, "CFA" "CTA" |
| DK2OM | 10150,0 | 0940 | 13 | 10 | E | | USB | | | Spanish fishery |
| DK2OM | 14000,0 | 1500 | 30 | 10 | FEa | | USB | | | Far East pirates |
| DK2OM | 14000,0 | 1958 | 18 | 09 | E? | | USB | | | pirates in Spanish voice |
| DK2OM | 14000,0 | 1230 | 25 | 10 | CHN | | A3E | | | carrier + both sidebands and mysterious grunt modulation - Central China |
| DK2OM | 14000,0 | 1330 | 25 | 10 | F | | FMCW | | 20k | French burst radar, 6 sps, similar Codar, South France - same as 7000 - every 15 min. |
| DK2OM | 14001,0 | 0920 | 25 | 10 | MRC | | N0N | | | carrier - Moroccan Southcoast |
| DK2OM | 14001,8 | 1405 | 04 | 10 | I | | PSK8 | 2400 | 2400 | Stanag4285 - 600 bps long - area of Bologna |
| DK2OM | 14008,0 | 1019 | 03 | 10 | RUS | | F1B | 50 | 500 | Moscow - vy bad signal |
| DK2OM | 14020,3 | 2010 | 06 | 10 | INS | | USB | | | Indonesian pirates, male and female voice, chatting and singing |
| DK2OM | 14021,3 | 2035 | 06 | 10 | INS | | USB | | | Indonesian pirates, male and female voice, chatting and singing |
| DK2OM | 14024,0 | 1324 | 24 | 10 | RUS | | F1B | 75 | 500/200 | Kaliningrad |
| DK2OM | 14037,0 | vt | dly | 10 | CHN ? | no ITU | FSK8 | 125 | 1750 | ALE, "313" "132" "932" |
| DK2OM | 14052,0 | 1015 | 28 | 10 | CHN | | FMCW | | 10k | Chinese OTH Radar - 66.66 sps - 7.6 sec bursts |
| DK2OM | 14060,0 | 0734 | 01 | 10 | ISR | | FSK8 | 125 | 1750 | ALE, "AAA" "AA1" |
| DK2OM | 14073,0 | 1530 | 29 | 10 | F | | noise | | 3000 | unid interference, disturbing PSK31 - area of Lyon |
| DK2OM | 14075,0 | 1318 | 07 | 10 | IND | | FMCW | | 50k | Codar ocean surface radar - 14075 - 14125 kHz - 2 sps - North-East India - also audible in Sri Lanka |
| DK2OM | 14104,0 | vt | dly | 10 | CHN | | FSK8 | 125 | 1750 | ALE, "A98" "L06" |
| DK2OM | 14106,0 | vt | dly | 10 | | | FSK8 | 125 | 1750 | ALE, "161" |
| DK2OM | 14109,0 | vt | dly | 10 | F | F4BXW | FSK8 | 1250 | 1750 | ALE, "F4BXW" - just for info |
| DK2OM | 14109,0 | vt | dly | 10 | S | SM5RVH | FSK8 | 125 | 1750 | ALE, "SM5RVH" - just for info! |
| DK2OM | 14137,3 | 0714 | 31 | 10 | CHN | | PSK4 | 75 | 2240 | PRC4 + 4 - traffic and idle |
| DK2OM | 14141,0 | 1546 | 29 | 10 | RUS | | F1B | 75 | 500 | Moscow |
| DK2OM | 14160,0 | 1358 | 15 | 10 | RUS | | F1B | 50 | 250 | Kaliningrad |
| DK2OM | 14192,0 | vt | dly | 10 | RUS | | F1B | 50 | 200/500 | RUS Navy Kaliningrad |
| DK2OM | 14204,0 | 1000 | 04 | 10 | RUS | | OFDM | 35.6 | 2800 | OFDM60 - Moscow |
| DK2OM | 14212,0 | 1106 | 18 | 10 | RUS | | OFDM | 30 | | OFDM60 - Kaliningrad |
| DK2OM | 14226,0 | 1028 | 30 | 10 | CHN | | FMCW | | 20k | OTH Radar China - 66.7 sps - 7.6 sec bursts - every 8 sec |
| DK2OM | 14232,0 | 0728 | 23 | 10 | | | FSK8 | 125 | 1750 | ALE, "357" "582" "923" "999" |
| DK2OM | 14236,0 | 1434 | 22 | 10 | RUS | REA4 | F1B | 100 | 2000 | harmonic from F1B on 7118 Hz, Moscow - daily |
| DK2OM | 14236,5 | 1112 | 18 | 10 | RUS | | OFDM | 30 | | OFDM60 - area of Moscow |
| DK2OM | 14247,0 | vt | dly | 10 | E | no ITU | FSK8 | 125 | 1750 | ALE, "151" "250" |
| DK2OM | 14253,0 | 1442 | 26 | 10 | | | | | | frequency hopper |
| DK2OM | 14261,0 | 1000 | 17 | 10 | RUS | | OFDM | 30 | | OFDM60 - area of Moscow |
| DK2OM | 14275,8 | 0734 | 31 | 10 | RUS | | OFDM | | | OFDM60 - Far East Russia |
| DK2OM | 14280,0 | 0718 | 31 | 10 | RUS | | F1B | 75 | 250 | Archangelsk |
| DK2OM | 14285,0 | 1116 | 18 | 10 | RUS | | OFDM | 30 | | OFDM60 - area of Smolensk |
| DK2OM | 14293,0 | 1126 | 01 | 10 | | | | | | frequency hopper |
| DK2OM | 14295,1 | ady | dly | 10 | TJK | | A3E | | | 3 rd from Radio Tajik on 4765 kHz |
| DK2OM | 14310,0 | 1121 | 18 | 10 | RUS | | OFDM | 30 | | OFDM60 - Kaliningrad |

| DK2OM | kHz | UTC | DD | MM | ITU | IDENT | MODE | BD | SH/SP | DETAILS |
|-------|---------|------|-----|----|-----|--------|------|------|-------|--|
| DK2OM | 14316,0 | vt | dly | 10 | ? | no ITU | FSK8 | 125 | 1750 | ALE, "601" "611" |
| DK2OM | 14316,0 | 0604 | 11 | 10 | TUR | | FMCW | | 20k | OTH Radar Ankara – 50 sps |
| DK2OM | 14325,1 | vt | vd | 10 | FEa | no ITU | FSK8 | 125 | 1750 | ALE, "776" "699" "475" |
| DK2OM | 14331,0 | vt | dly | 10 | | | FSK8 | 125 | 1750 | ALE, "417" "663" |
| DK2OM | 14340,0 | 1225 | 25 | 10 | CHN | | FMCW | | 10k | Chinese OTH Radar, 66.66 sps, 3.8 sec bursts – every 15 sec |
| DK2OM | 14341,0 | vt | dly | 10 | I | | FSK8 | 125 | 1750 | ALE, "20" - area of Rome |
| DK2OM | 14341,6 | vt | 04 | 10 | CHN | | PSK8 | 2400 | 2400 | MIL-188-110A variant – daily, various times |
| DK2OM | 14343,0 | vt | dly | 10 | CHN | no ITU | FSK8 | 125 | 1750 | ALE, "L06" "A98" |
| DK2OM | 14344,6 | 1420 | 22 | 10 | CHN | | PSK8 | 2400 | 2400 | MIL-188-110A variant –, 600 bps short – daily, various times |
| DK2OM | 14350,0 | vt | dly | 10 | TWN | no ITU | FSK8 | 125 | 1750 | ALE-LSB , "ABJECT, AFFECT, APPLEF" – Taiwanese Navy |
| DK2OM | 18107,0 | 1329 | 03 | 10 | RUS | | F1B | 50 | 200 | RUS MIL Moscow |
| DK2OM | 18132,0 | 0959 | 11 | 10 | CHN | | FMCW | | 10k | Chinese OTH Radar – 66.66 sps - 3.9 sec bursts – jumping to 18144 and back |
| DK2OM | 18132,0 | 0744 | 29 | 10 | RUS | | F1B | 75 | 500 | east of Moscow |
| DK2OM | 18144,0 | 0959 | 11 | 10 | CHN | | FMCW | | 10k | Chinese OTH Radar – 66.66 sps - 3.9 sec bursts |
| DK2OM | 18151,0 | 0732 | 24 | 10 | CHN | | FMCW | | 10k | Chinese OTHR – 85.7 sps – burst of 3 sec |
| DK2OM | 21000,0 | vt | dly | 10 | SDN | | USB | | | SDN MFA calling emba Yemen for Pactor 1 traffic , whistling male persons |
| DK2OM | 21000,0 | 0737 | 24 | 10 | RUS | | USB | | | vocoder Yakhta, encrypted speech – Nizhniy Tagil |
| DK2OM | 21000,0 | 0945 | 27 | 10 | CHN | | A3E | | | carrier + both sidebands and mysterious grunt modulation – location: Central China |
| DK2OM | 21001,5 | 1315 | 03 | 10 | RUS | | F1B | 100 | 150 | vocoder Yakhta inband synchro, Nizhny Tagil |
| DK2OM | 21002,1 | vt | dly | 11 | SDN | | F1B | 100 | 170 | Pactor 1 encrypted – MFA Sudan – Khartoum with emba Yemen |
| DK2OM | 21004,6 | 1450 | 22 | 10 | RUS | | PSK2 | 1200 | 1200 | Nizhniy Tagil |
| DK2OM | 21006,6 | 1546 | 30 | 10 | | | F1B | 100 | 300 | |
| DK2OM | 21010,0 | 0945 | 25 | 10 | CHN | | N0N | | | carrier |
| DK2OM | 21038,0 | 1520 | 09 | 10 | UKR | | PSK2 | 120 | 2600 | AT3004D – UKR MIL |
| DK2OM | 21040,0 | 1337 | 24 | 10 | UKR | | PSK2 | 120 | 2600 | AT3004D - Sevastopol |
| DK2OM | 21044,0 | 1339 | 25 | 10 | UKR | | PSK2 | 120 | 2600 | AT3004D - Sevastopol |
| DK2OM | 21060,0 | 0740 | 28 | 10 | | | A3E | | | unid BC IM |
| DK2OM | 21089,5 | vt | dly | 10 | HRV | 9A5EX | FSK8 | 125 | 1750 | ALE, "9A5EX" - just for info! |
| DK2OM | 21096,0 | vt | dly | 10 | POR | CT2GOY | FSK8 | 125 | 1750 | ALE, "CT2GOY" – just for info |
| DK2OM | 21096,0 | vt | dly | 10 | INS | YD00XH | FSK8 | 125 | 1750 | ALE, amateurs "YD00XH3" "YD00XH7" – just for info! |
| DK2OM | 21100,0 | 1400 | 05 | 10 | CYP | | FMCW | | 20k | OTH Radar Cyprus, 50 sps |
| DK2OM | 21100,0 | 0955 | 09 | 10 | TUR | | FMCW | | 20k | OTH Radar Ankara – 50 sps |
| DK2OM | 21116,0 | vt | dly | 10 | HRV | 9A0ST | FSK8 | 1250 | 1750 | ALE, "9A0ST" "9A5EX" – just for info! |
| DK2OM | 21121,5 | 0729 | 03 | 10 | E | | USB | | | Spanish fishery |
| DK2OM | 21123,3 | 0731 | 03 | 10 | CHN | | PSK4 | 75 | 2240 | PRC4+4 – idle (F7B) and traffic (PSK4) – 21123.267 kHz center – Central China |
| DK2OM | 21130,0 | 1015 | 08 | 10 | TUR | | FMCW | | 20k | OTH Radar Ankara – 50 sps |
| DK2OM | 21138,0 | 0749 | 31 | 10 | | | A1A | | | bad keying |
| DK2OM | 21145,0 | vt | dly | 10 | MRC | | FSK8 | 125 | 1750 | ALE, "B301", "C3", "IR4" "T4" "E4" |
| DK2OM | 21154,0 | 0825 | 13 | 10 | | | | | | frequency hopper |
| DK2OM | 21170,0 | 0820 | 24 | 10 | CHN | | FMCW | | 10k | Chinese OTH Radar – 41.5 sps – 6 sec bursts |
| DK2OM | 21190,0 | 1038 | 26 | 10 | TUR | | FMCW | | 20k | OTH Radar Ankara – 50 sps |
| DK2OM | 21200,0 | 0654 | 05 | 10 | RUS | | F1B | 100 | 1000 | |
| DK2OM | 21240,0 | 0606 | 04 | 10 | MEa | | FMCW | | 20k | OTH Radar Cyprus ot Turkey – 50 sps |
| DK2OM | 21272,0 | 1455 | 03 | 10 | RUS | | PSK2 | 120 | 2600 | AT3004D – submode idle |
| DK2OM | 21300,0 | 0742 | 03 | 10 | RUS | | F1B | 100 | 2000 | harmonic from 5325 kHz (500 Hz shift) – area of Moscow - |

| DK2OM | kHz | UTC | DD | MM | ITU | IDENT | MODE | BD | SH/SP | DETAILS |
|-------|---------|------|-----|----|-----|-------|------|------|-------|---|
| | | | | | | | | | | daily |
| DK2OM | 21305,0 | 0745 | 04 | 10 | CHN | | FMCW | | 10k | Chinese OTH Radar, 66.66 sps, 3.8 sec bursts – every 15 sec |
| DK2OM | 21319,0 | 0748 | 19 | 10 | CHN | | FMCW | | 10k | OTH Radar China – 66.7 sps |
| DK2OM | 21330,0 | vt | dly | 10 | CAN | | FSK8 | 125 | 1750 | ALE, “VE3OUV” - just for info |
| DK2OM | 21340,0 | 1230 | 08 | 10 | TUR | | FMCW | | 20k | OTH Radar Ankara – 50 sps |
| DK2OM | 21346,0 | 0828 | 04 | 10 | CHN | | FMCW | | 10k | Chinese OTH Radar, 66.66 sps, 3.8 sec bursts – every 15 sec |
| DK2OM | 21357,0 | 0827 | 04 | 10 | CHN | | FMCW | | 10k | Chinese OTH Radar, 66.66 sps, 3.8 sec bursts – every 15 sec |
| DK2OM | 21370,0 | 0738 | 03 | 10 | MEa | | FMCW | | 20k | OTH Radar Cyprus or Turkey – 50 sps |
| DK2OM | 21370,0 | 0820 | 21 | 10 | | | | | | frequency hopper |
| DK2OM | 21376,0 | 0805 | 11 | 10 | CHN | | FMCW | | 10k | Chinese OTH Radar – 66.66 sps - 3.9 sec bursts |
| DK2OM | 21395,0 | 1320 | 03 | 10 | CYP | | FMCW | | 20k | OTH Radar Cyprus – 50 sps |
| DK2OM | 21400,0 | 0740 | 03 | 10 | RUS | | F1B | 50 | 2000 | harmonic from 5350 kHz – area of Moscow - daily |
| DK2OM | 21404,2 | 0826 | 24 | 10 | RUS | | F3E | | | taxi in Moscow - taking passengers to Central Baths (BASSEIN) and Cultural Center (DOM KULTURY) and some unspecified stations (STANTSIAS) |
| DK2OM | 21409,5 | 0611 | 15 | 10 | RUS | | F1B | 100 | 2000 | CIS14 – harmonic from 10704.75 - Jekaterinburg |
| DK2OM | 21424,0 | 1419 | 12 | 10 | RUS | | F1B | 50 | 400 | harmonic from 10712 kHz (50 Bd, 200 Hz shift) – area of Novgorod |
| DK2OM | 21432,0 | 0821 | 02 | 10 | RUS | | PSK2 | 120 | 2600 | AT3004D - |
| DK2OM | 21438,0 | vt | dly | 10 | UKR | RCV | A1A | | | RIP90 de RCV - RUS Navy Sevastopol |
| DK2OM | 21440,0 | 1458 | 03 | 10 | | | | | | frequency hopper |
| DK2OM | 21440,8 | 1120 | 09 | 10 | AFG | | PSK8 | 2400 | 2400 | MIL-188-??? |
| DK2OM | 21450,0 | 0800 | 01 | 10 | | | A3E | | | unid BC |
| DK2OM | 24900,0 | 1608 | 19 | 10 | | | | | | frequency hopper |
| DK2OM | 24970,0 | 0930 | 19 | 10 | TUR | | FMCW | | 20k | OTH Radar North-West-Turkey, 50 sps |
| DK2OM | 25000,0 | ady | dly | 10 | FIN | | A3E | | | time signal Helsinki – just for info – carrier on 25000 – dots on 25001 and 24999 |
| DK2OM | 28000,0 | vt | dly | 10 | B | | A3E | | | 28000 – 28325 numerous Brazilian CBers |
| DK2OM | 28000,0 | vt | dly | 10 | CIS | | F3E | | | 28000 – 29700 numerous CIS taxi nets |
| DK2OM | 28000,0 | 0928 | 16 | 10 | | | USB | | | pirates in Arabic voice |
| DK2OM | 28000,0 | 1622 | 28 | 10 | B | | USB | | | Brazilian pirates |
| DK2OM | 28000,2 | 0730 | 10 | 10 | NAf | | USB | | | men in African tribal language, 180 deg. from DL |
| DK2OM | 28005,0 | 1042 | 13 | 10 | FEa | | F3E | | | Far East pirates |
| DK2OM | 28025,1 | 0935 | 16 | 10 | | | F1B | 51 | 300 | F1B bursts - west of Lisbon |
| DK2OM | 28025,3 | 0938 | 16 | 10 | | | F1B | 51 | 300 | F1B bursts - west of Lisbon |
| DK2OM | 28035,0 | 1104 | 17 | 10 | TUR | | FMCW | | 20k | OTH Radar NW-Turkey, 50 sps |
| DK2OM | 28055,0 | vt | dly | 10 | RUS | | F3E | | | RUS taxi - Moscow |
| DK2OM | 28100,0 | ady | dly | 10 | POR | | F1B | 51 | 320 | F1B bursts - 28100.010 kHz - west of Lisbon |
| DK2OM | 28100,1 | ady | dly | 10 | POR | | F1B | 51 | 320 | F1B bursts - 28100.100 kHz - west of Lisbon |
| DK2OM | 28100,2 | ady | dly | 10 | POR | | F1B | 51 | 320 | F1B bursts - 28100.160 kHz - west of Lisbon |
| DK2OM | 28100,8 | ady | dly | 10 | POR | | F1B | 51 | 320 | F1B bursts - 28100.800 kHz - west of Lisbon |
| DK2OM | 28102,0 | ady | dly | 10 | POR | | F1B | 51 | 320 | F1B bursts – 28102.000 kHz - west of Lisbon |
| DK2OM | 28140,0 | 1500 | 28 | 10 | AFR | | USB | | | male net in African tribal language |
| DK2OM | 28145,0 | vt | dly | 10 | RUS | | F3E | | | taxi – Rostov na Donu |

| DK2OM | kHz | UTC | DD | MM | ITU | IDENT | MODE | BD | SH/SP | DETAILS |
|-------|---------|------|-----|----|-----|-------|------|------|-------|--|
| DK2OM | 28152,0 | 1448 | 26 | 10 | | | | | | frequency hopper |
| DK2OM | 28185,0 | 1429 | 13 | 10 | | | | | | frequency hopper |
| DK2OM | 28200,0 | 0800 | 27 | 10 | POR | | F1B | 51 | 320 | F1B bursts - west of Lisbon |
| DK2OM | 28205,0 | 0920 | 27 | 10 | E | | A3E | | | Spanish CBers |
| DK2OM | 28210,0 | vt | dly | 10 | UKR | | F3E | | | taxi - Dnepropetrovsk |
| DK2OM | 28255,0 | vt | dly | 10 | KAZ | | F3E | | | taxi - Almaty |
| DK2OM | 28285,0 | vt | dly | 10 | RUS | | F3E | | | taxi - Rostov na Donu |
| DK2OM | 28305,0 | 0812 | 12 | 10 | RUS | | F3E | | | taxi - Krasnodar |
| DK2OM | 28350,0 | 1045 | 11 | 10 | TUR | | FMCW | | 20k | OTH Radar South East Turkey - 50 sps |
| DK2OM | 28376,0 | 0840 | 18 | 10 | | | | | | frequency hopper |
| DK2OM | 28390,0 | vt | dly | 10 | RUS | | F3E | | | taxi - Vladikavkaz |
| DK2OM | 28550,0 | 0935 | 11 | 10 | TUR | | FMCW | | 20k | OTH Radar South East Turkey - 50 sps |
| DK2OM | 28825,0 | vt | dly | 10 | UKR | | F3E | | | taxi - Odessa |
| DK2OM | 28895,0 | vt | dly | 10 | RUS | | F3E | | | taxi - Stavropol |
| DK2OM | 28945,0 | vt | dly | 10 | UKR | | F3E | | | taxi - Donetsk |
| DK2OM | 29051,0 | 1050 | 11 | 10 | TUR | | FMCW | | 20k | OTH Radar Ankara - 25 sps |
| DK2OM | 29055,0 | 0730 | 09 | 10 | RUS | | F3E | | | taxi Stavropol |
| DK2OM | 29060,0 | 0740 | 09 | 10 | TUR | | FMCW | | 20k | OTH Radar Ankara - 50 sps |
| DK2OM | 29100,0 | 0912 | 31 | 10 | MEa | | FMCW | | 44k | OTH Radar - 44 kHz wide - 307 and 872 sps |
| DK2OM | 29350,0 | 1240 | 11 | 10 | MEa | | FMCW | | 44k | OTH Radar - 44 kHz wide - 872 and 307 sps - 5.9 sec bursts |
| DK2OM | 29500,0 | ady | dly | 10 | G | | F1B | 81.9 | 140 | Datawell-buoy "Waverider" - area of Gibraltar |
| DK2OM | 29500,0 | 0707 | 23 | 10 | FEa | | F3E | | | Far East pirates |
| DK2OM | 29525,0 | ady | dly | 10 | MRC | | F1B | 81.9 | 140 | Datawell-buoy "Waverider" - Moroccan Atlantic coast - area of Casablanca |
| DK2OM | 29575,0 | vt | dly | 10 | RUS | | F3E | | | RUS taxi - Moscow - daily, all day |
| DK2OM | 29605,0 | 1400 | 26 | 10 | TUR | | FMCW | | 20k | OTH Radar NW-Turkey, 50 sps |
| DK2OM | 29645,0 | 1530 | 02 | 10 | TUR | | FMCW | | 20k | OTH Radar NW-Turkey, 50 sps |

IRTS - Ireland - EI5DD (Steve)

KARS - Kuwait - 9K2RR (Faisal)

MRASZ - Hungary - HA7PL (Laci)

| SOC | kHz | UTC | DD | MM | ITU | IDENT | MODE | BD | SH | DETAILS |
|-------|--------|------|----|----|-----|-------|------|----|-----|------------------------------|
| MRASZ | 6999,9 | 1623 | 19 | 10 | | | USB | | | Ui. language |
| MRASZ | 7000,0 | 1749 | 9 | 10 | | | NON | | | |
| MRASZ | 7000,8 | 1640 | 19 | 10 | | | USB | | | Ui. language |
| MRASZ | 7017,0 | 1848 | 13 | 10 | | | F1B | | 250 | |
| MRASZ | 7038,7 | 1833 | 13 | 10 | UKR | D | A1A | | | beacon "D" |
| MRASZ | 7038,7 | 1959 | 15 | 10 | UKR | D | A1A | | | beacon "D" |
| MRASZ | 7038,8 | 1639 | 8 | 10 | RUS | P | A1A | | | beacon „P” |
| MRASZ | 7038,8 | 1729 | 9 | 10 | RUS | P | A1A | | | beacon „P” |
| MRASZ | 7038,9 | 1619 | 14 | 10 | RUS | S | A1A | | | beacon "S" |
| MRASZ | 7038,9 | 1730 | 16 | 10 | RUS | S | A1A | | | beacon "S" |
| MRASZ | 7039,0 | 1729 | 9 | 10 | RUS | C | A1A | | | beacon "C" |
| MRASZ | 7039,0 | 1906 | 13 | 10 | RUS | C | A1A | | | beacon "C" |
| MRASZ | 7039,8 | 1954 | 14 | 10 | | | NON | | | |
| MRASZ | 7054,0 | 1905 | 13 | 10 | RUS | | F1B | 50 | 200 | |
| MRASZ | 7054,0 | 1955 | 15 | 10 | RUS | | F1B | 50 | 200 | |
| MRASZ | 7080,0 | 1751 | 15 | 10 | | | F1B | | 200 | |
| MRASZ | 7080,0 | 1803 | 16 | 10 | | | F1A | | | RDL ..."51118 358T1 51118 K" |
| MRASZ | 7088,0 | 1741 | 16 | 10 | | | A1A | | | |
| MRASZ | 7088,0 | 1802 | 16 | 10 | | | A1A | | | „RMBB OK QRU K” |
| MRASZ | 7100,0 | 1630 | 19 | 10 | | Ui | NON | | | 59+60 dB |

| SOC | kHz | UTC | DD | MM | ITU | IDENT | MODE | BD | SH | DETAILS |
|-------|---------|------|----|----|-----|-------|------|-----|------|-------------------|
| MRASZ | 7111,0 | 1948 | 14 | 10 | | | F1B | | 250 | |
| MRASZ | 7113,0 | 2036 | 22 | 10 | | | F1B | | | |
| MRASZ | 7117,0 | 1623 | 14 | 10 | | | F1B | 100 | 1000 | |
| MRASZ | 7117,0 | 1832 | 22 | 10 | | | F1B | 100 | 1000 | |
| MRASZ | 7120,0 | 1704 | 9 | 10 | | Ui | A3E | | | UiBC music |
| MRASZ | 7120,0 | 1820 | 13 | 10 | | Ui | A3E | | | UiBC music |
| MRASZ | 7120,0 | 1624 | 14 | 10 | | Ui | A3E | | | UiBC music |
| MRASZ | 7122,0 | 1825 | 13 | 10 | | | F1B | | 250 | |
| MRASZ | 7160,0 | 1738 | 16 | 16 | | Ui | A3E | | | UiBC |
| MRASZ | 7170,0 | 1709 | 9 | 10 | | Ui | A3E | | | UiBC |
| MRASZ | 7175,0 | 1703 | 23 | 10 | | Ui | A3E | | | UiBC |
| MRASZ | 7176,0 | 1826 | 13 | 10 | | | F1B | | 250 | |
| MRASZ | 7180,0 | 1625 | 14 | 10 | | Ui | A3E | | | UiBC |
| MRASZ | 7180,0 | 1715 | 17 | 10 | | Ui | A3E | | | UiBC |
| MRASZ | 7185,0 | 1740 | 15 | 10 | | Ui | A3E | | | UiBC |
| MRASZ | 7197,9 | 1829 | 13 | 10 | | | N0N | | | |
| MRASZ | 14098,8 | 0735 | 26 | 10 | | | A1A | | | IZ0HCC/B ? |
| MRASZ | 14192,0 | 0728 | 26 | 10 | | | F1B | | 500 | |
| MRASZ | 14234,0 | 1715 | 23 | 10 | | | F1B | | 1000 | |
| MRASZ | 18068,0 | 0936 | 21 | 10 | | | OTHR | | | 18068 – 18080 kHz |
| MRASZ | 18068,0 | 1237 | 21 | 10 | | | OTHR | | | 18068 – 18168 kHz |
| MRASZ | 21001,5 | 1156 | 21 | 10 | | Ui | F1B | | 150 | |
| MRASZ | 21001,5 | 0752 | 22 | 10 | | Ui | F1B | | 150 | |
| MRASZ | 21070,0 | 0812 | 22 | 10 | | | OTHR | | | 21040 – 21100 kHz |
| MRASZ | 28085,0 | 0845 | 22 | 10 | | | A3E | | | russian |
| MRASZ | 28135,0 | 0837 | 22 | 10 | | | NBFM | | | russian |
| MRASZ | 28145,0 | 0756 | 20 | 10 | | | NBFM | | | russian |
| MRASZ | 28145,0 | 0843 | 22 | 10 | | | NBFM | | | russian |
| MRASZ | 28185,0 | 0850 | 22 | 10 | | | NBFM | | | russian |
| MRASZ | 28235,0 | 0849 | 22 | 10 | | | NBFM | | | russian |
| MRASZ | 28245,0 | 0756 | 20 | 10 | | | NBFM | | | russian |
| MRASZ | 28245,0 | 0911 | 22 | 10 | | | NBFM | | | russian |
| MRASZ | 28255,0 | 0756 | 20 | 10 | | | NBFM | | | russian |
| MRASZ | 28265,0 | 0754 | 20 | 10 | | | NBFM | | | russian |

OEVSV – Austria – OE3GSA (Gerd)

| SOC | kHz | UTC | DD | MM | ITU | IDENT | MODE | BD | SH | DETAILS |
|-------|---------|------|----|----|-----|-------|------|----|-----|--------------------|
| oevsv | 7039 | 0555 | 13 | 10 | RU | P | A1A | | | usual beacon |
| oevsv | 7120 | 1650 | 07 | 10 | | | A3E | | | BC Hargaysha |
| oevsv | 7120 | 1810 | 12 | 10 | | | A3E | | | BC Hargaysha |
| oevsv | 7180 | 1720 | 17 | 10 | | | A3E | | | BC music, news |
| oevsv | 14008 | 0625 | 01 | 10 | | | F1B | 50 | 150 | |
| oevsv | 14009.7 | 0540 | 15 | 10 | | | USB | | | Male voices QTE200 |
| oevsv | 14009.7 | 0615 | 19 | 10 | | | USB | | | Male voices |
| oevsv | 28025 | 1710 | 17 | 10 | | | F1B | | | Testing |
| oevsv | 29186 | 0930 | 28 | 10 | RU | | A3E | | | Female control stn |

PZK – Poland – SP3UZ (Wladyslaw)

REP – Portugal – CT4AN (Jose Francisco)

| SOC | KHz | UTC | DD | MM | ITU | IDENT | MODE | BD | SH | DETAILS |
|-----|--------|-------|----|----|----------|-------|-------|----|----|------------------------|
| REP | 3505 | 18.44 | 05 | 10 | | ? | Pulse | | | 1 bps MARKER |
| REP | 3510 | 22.02 | 24 | 10 | I | | J3E-L | | | Intruders |
| REP | 3512,5 | 21.12 | 12 | 10 | | ni | J3E-U | | | Russian voices |
| REP | 3525 | 21.39 | 07 | 10 | POR E | ni | J3E-U | | | Fishermen |
| REP | 3535 | 21.17 | 09 | 10 | E | | J3R-U | | | Fishermen |
| REP | 3540 | 22.22 | 09 | 10 | E | | J3E-L | | | Spanish fishermen |
| REP | 3575 | 23.30 | 16 | 10 | E | | J3E-U | | | Spanish fishery Coruna |

| SOC | KHz | UTC | DD | MM | ITU | IDENT | MODE | BD | SH | DETAILS |
|-----|---------|-------|----|----|----------|-------|---------------|-----|-----|---|
| REP | 3610 | 20.26 | 22 | 10 | | | J3E-U | | | Arabic talks |
| REP | 3615 | 20.55 | 27 | 10 | E | | J3E-U | | | Spanish fishermen |
| REP | 3630 | 21.41 | 19 | 10 | | | J3E-U | | | Arabic talks |
| REP | 3635 | 19.33 | 12 | 10 | E POR | | J3E-U | | | Spanish + Portuguese fishermen |
| REP | 3750 | 23.11 | 23 | 10 | UKR | | A2A | | | Pulse |
| REP | 7000 | 22.12 | 30 | 10 | | V | A1A | | | Marker |
| REP | 7000 | 19.31 | 21 | 10 | | | Pulse | | | multi tone unid modem |
| REP | 7001 | 21.07 | 29 | 10 | E | | J3E-L | | | Tuning signal carrier |
| REP | 7002,5 | 16.22 | 30 | 10 | E | | J3E-U | | | Fishermen |
| REP | 7005 | 16.48 | 27 | 10 | | | J3E-U | | | Arab talking |
| REP | 7010 | 17.13 | 31 | 10 | E | | J3E-U | | | Fishermen talking with YLs |
| REP | 7015 | 19.31 | 7 | 10 | RUS | | F1B | 75 | 250 | |
| REP | 7016,75 | 21.53 | 05 | 10 | | | J3E-U | | | unid male ops chatter |
| REP | 7017 | 20.25 | 08 | 10 | | | J3E-U | | | unid male ops chatter |
| REP | 7021 | 21.25 | 31 | 10 | | | J3E-U | | | unid ops chatting |
| REP | 7027 | 21.17 | 18 | 10 | RUS | | J3E-U | | | mil. model poss russian |
| REP | 7035 | 20.44 | 01 | 10 | E | | J3E-L | | | Spanish fishermen |
| REP | 7038,6 | 22.12 | 09 | 10 | RUS | S | A1A | | | MURMANSK, ADY, DLY 1.6uV S4 |
| REP | 7038,7 | 22.31 | 19 | 10 | UKR | D | A1A | | | SEVASTOPOL, ADY, DLY 25uV S8 |
| REP | 7038,7 | 23.47 | 05 | 10 | UKR | D | A1A | | | SEVASTOPOL, ADY, DLY 0.2uV S1 |
| REP | 7038,7 | 23.55 | 20 | 10 | UKR | D | A1A | | | SEVASTOPOL Beacon 12.5uV S7 |
| REP | 7039,0 | 21.39 | 23 | 10 | RUS | C | A1A | | | MOSCOW, ADY, DLY 6.3uV S6 |
| REP | 7039,0 | 21.35 | 12 | 10 | RUS | C | A1A | | | MOSCOW Beacon 25uV S8 |
| REP | 7039,1 | 22.33 | 12 | 10 | RUS | A | A1A | | | VOLGOGRAD, ADY, DLY 3.1uV S5 |
| REP | 7039,1 | 23.41 | 12 | 10 | RUS | A | A1A | | | VOLGOGRAD, ADY, DLY 3.1uV S5 |
| REP | 7045 | 19.58 | 08 | 10 | | | J3E-U | | | Arabic talks |
| REP | 7069 | 10.45 | 30 | 10 | | | J3E-U | | | Inversion Encoded voices |
| REP | 7078 | 18.44 | 11 | 10 | n.i. | | A3E | | | Multitone AM modulated carrier |
| REP | 7105 | 20.40 | 19 | 10 | TWN | | 8k00 A3EGN | | | Radio Sound of Hope 25uV S8 |
| REP | 7105 | 22.12 | 11 | 10 | TWN | | 8k00 A3EGN | | | Sound of Hope - far eastern boradcast station |
| REP | 7120 | 18.24 | 11 | 10 | SOM | | 8k00 A3EGN | | | Radio Hargeisa |
| REP | 7165 | 21.36 | 31 | 10 | RUS | | FMCW | | | Foghorn OTH radar (old russian ship radar?) |
| REP | 7175 | 19.45 | 14 | 10 | n.i. | | 8k00 A3EGN | | | Broadcasting |
| REP | 10105 | 19.38 | 10 | 10 | E | | J3E-U | | | spanish fishermen, Galicia province |
| REP | 10115 | 19.22 | 21 | 10 | MLA | | J3E-U | | | Malaysian fishers |
| REP | 10115,5 | 22.53 | 10 | 10 | | ni | A3E | | | 5 Letters Station |
| REP | 10130 | 20.29 | 20 | 10 | | | FMCW | | | OTH radar |
| REP | 10133 | 22.35 | 07 | 10 | | ni | J3E-U | | | Numbers Station (5 digits) |
| REP | 10135 | 20.51 | 17 | 10 | | ni | F1B | 300 | 170 | |
| REP | 10135 | 19.12 | 17 | 10 | | ni | J3E-U | | | Scrambling transmission |
| REP | 14001,5 | 20.41 | 06 | 10 | | | ??? | | | STANAG modem |
| REP | 14005 | 08.37 | 19 | 10 | E | | J3E-U | | | Spanish fishery sea to harbour and wives |
| REP | 14008 | 10.56 | 11 | 10 | | | F1B | 50 | 500 | 50/500 distorted signal |
| REP | 14071,5 | 15.44 | 27 | 10 | E | | J3E-U | | | Talks |
| REP | 14155 | 20.07 | 21 | 10 | | ni | J3E-U | | | Phone Patch |
| REP | 21000 | 16.22 | 05 | 10 | | | FMCW | | | OTH Radar |
| REP | 21001,5 | 16.21 | 05 | 10 | | | F1B | | 170 | 170hz shift signal |
| REP | 21001,5 | 13.06 | 31 | 10 | | | F1B | 100 | 130 | unid 100/130 signal |
| REP | 21185 | 12.42 | 27 | 10 | | | FMCW | | | OTH radar |
| REP | 24985 | 16.23 | 05 | 10 | B | | A3E | | | Brazilian ops w/ roger beeps |
| REP | 24990 | 13.01 | 14 | 10 | | | FMCW | | | OTH radar |
| REP | 24990 | 12.11 | 19 | 10 | | | F3E | | | OTH radar |
| REP | 28005 | 10.59 | 11 | 10 | B | | A3E | | | Brazilian CB'ers |
| REP | 28014,5 | 16.04 | 08 | 10 | B | | J3E-U | | | Brazilian truckers |
| REP | 28015 | 12.06 | 14 | 10 | B | | J3E-U | | | Brazilian CB' ers |
| REP | 28050 | 16.09 | 06 | 10 | RUS | | F3E | | | Taxis |
| REP | 28055 | 13.33 | 05 | 10 | B | | A3E | | | Brazilian CB'ers. |
| REP | 28065 | 13.26 | 05 | 10 | B | | A3E | | | Brazilian CB'ers |
| REP | 28065 | 12.06 | 07 | 10 | B | | A3E | | | Brazilian CB'ers |
| REP | 28065 | 16.05 | 08 | 10 | B | | A3E | | | Brazilian CB'ers |
| REP | 28065 | 13.46 | 11 | 10 | RUS | | F3E | | | Russian YL taxi dispatcher |
| REP | 28065 | 11.12 | 19 | 10 | RUS | | F3E | | | Russian taxi dispatchers |

| SOC | KHz | UTC | DD | MM | ITU | IDENT | MODE | BD | SH | DETAILS |
|-----|-------|-------|----|----|-----|-------|-------|----|----|--|
| REP | 28070 | 13.27 | 16 | 10 | F | | A3E | | | CBs |
| REP | 28110 | 16.06 | 08 | 10 | B | | A3E | | | Brazilian CB'ers |
| REP | 28115 | 16.03 | 08 | 10 | B | | A3E | | | Brazilian CB'ers |
| REP | 28125 | 09.52 | 05 | 10 | | | F3E | | | unid ops |
| REP | 28135 | 15.36 | 16 | 10 | RUS | | F3E | | | Radio-Taxis (Central to mobile) |
| REP | 28135 | 10.48 | 04 | 10 | | | F3E | | | unid ops FM mode |
| REP | 28140 | 16.35 | 18 | 10 | | | J3E-U | | | unid language ops |
| REP | 28145 | 12.14 | 05 | 10 | RUS | | F3E | | | Russian taxi dispatcher YL |
| REP | 28145 | 13.34 | 05 | 10 | B | | A3E | | | Brazilian CB'ers. Also F3E mode ops |
| REP | 28145 | 12.52 | 31 | 10 | B | | A3E | | | Brazilian CB'ers |
| REP | 28155 | 12.19 | 05 | 10 | RUS | | F3E | | | Russian taxi dispatcher YL |
| REP | 28165 | 09.25 | 05 | 10 | RUS | | F3E | | | Russian YL taxi dispatcher |
| REP | 28175 | 12.21 | 05 | 10 | RUS | | F3E | | | Russian taxi dispatcher YL |
| REP | 28175 | 12.53 | 31 | 10 | B | | A3E | | | Brazilian CB'ers |
| REP | 28185 | 13.35 | 05 | 10 | B | | A3E | | | Brazilian CB'ers |
| REP | 28185 | 16.09 | 08 | 10 | B | | A3E | | | Brazilian CB'ers |
| REP | 28190 | 09.18 | 14 | 10 | | | FMCW | | | OTH radar |
| REP | 28200 | 11.40 | 11 | 10 | B | | A3E | | | Brazilian CB'ers |
| REP | 28205 | 11.41 | 11 | 10 | B | | A3E | | | Brazilian CB'ers, also F3E ops |
| REP | 28225 | 12.08 | 05 | 10 | RUS | | F3E | | | Russian taxi dispatcher YL |
| REP | 28235 | 13.35 | 05 | 10 | B | | A3E | | | Brazilian CB'ers |
| REP | 28255 | 11.55 | 04 | 10 | RUS | | F3E | | | YL russian dispatcher |
| REP | 28255 | 13.37 | 05 | 10 | RUS | | F3E | | | Russian taxis, Brazilian CB'ers F3E |
| REP | 28255 | 11.42 | 11 | 10 | B | | A3E | | | Brazilian CB'ers |
| REP | 28255 | 12.56 | 31 | 10 | | | A3E | | | unid ops, several signals |
| REP | 28260 | 13.27 | 05 | 10 | B | | A3E | | | Brazilian CB'ers. Also F3E mode ops |
| REP | 28295 | 09.32 | 21 | 10 | | | FMCW | | | OTH radar |
| REP | 28305 | 16.08 | 08 | 10 | | ni | ??? | | | daily unreadable mess of all modes |
| REP | 28305 | 12.54 | 31 | 10 | B | | A3E | | | Brazilian CB'ers, also F3E |
| REP | 28315 | 11.50 | 04 | 10 | B | | A3E | | | Brazilian truck drivers |
| REP | 28315 | 13.33 | 05 | 10 | B | | A3E | | | Brazilian CB'ers. Also F3E mode ops |
| REP | 28315 | 12.57 | 31 | 10 | B | | A3E | | | Brazilian CB'ers |
| REP | 28405 | 08.38 | 24 | 10 | | | F1B | | | on-off unid sigs. F3E russian ops as well |
| REP | 28485 | 11.39 | 11 | 10 | | | FMCW | | | OTH radar |
| REP | 28550 | 09.27 | 05 | 10 | | | FMCW | | | OTH radar |
| REP | 28550 | 14.25 | 07 | 10 | | | FMCW | | | OTH radar |
| REP | 28560 | 09.38 | 01 | 10 | POR | | A3E | | | Portuguese fishermen |
| REP | 28855 | 10.55 | 04 | 10 | | | F3E | | | CIS Taxi dispatcher |
| REP | 28865 | 13.29 | 05 | 10 | RUS | | F3E | | | Russian taxi dispatcher YL |
| REP | 28900 | 12.05 | 23 | 10 | | | FMCW | | | OTH radar |
| REP | 28925 | 10.49 | 04 | 10 | | | F3E | | | CIS taxi dispatcher |
| REP | 28925 | 12.24 | 08 | 10 | RUS | | F3E | | | Russian YL taxis dispatcher |
| REP | 28930 | 09.08 | 12 | 10 | | | FMCW | | | OTH radar |
| REP | 28940 | 10.53 | 04 | 10 | POR | | A3E | | | Portuguese fishermen |
| REP | 28945 | 09.58 | 15 | 10 | POR | | A3E | | | Portuguese fishermen |
| REP | 28975 | 13.29 | 05 | 10 | RUS | | F3E | | | Russian taxi dispatcher YL |
| REP | 29000 | 08.34 | 13 | 10 | | | FMCW | | | OTH radar |
| REP | 29030 | 10.22 | 05 | 10 | | | FMCW | | | OTH radar |
| REP | 29035 | 10.40 | 19 | 10 | RUS | | F3E | | | Russian taxi dispatchers |
| REP | 29100 | 10.41 | 19 | 10 | | | FMCW | | | OTH radar |
| REP | 29120 | 11.07 | 19 | 10 | RUS | | F3E | | | Russian taxi dispatchers |
| REP | 29270 | 11.48 | 14 | 10 | | | F3E | | | unmodulated signal |
| REP | 29351 | 12.27 | 14 | 10 | | | A1A | | | RS15 beacon (not an intruder, just FYI) |
| REP | 29425 | 10.08 | 12 | 10 | | | FSK | | | unid HF modem |
| REP | 29430 | 09.29 | 12 | 10 | RUS | | F3E | | | Russian YL dispatcher |
| REP | 29435 | 09.19 | 19 | 10 | | | F3E | | | unid language YL and OM chatting |
| REP | 29435 | 11.12 | 19 | 10 | RUS | | F3E | | | Russian taxi dispatchers |
| REP | 29475 | 09.24 | 19 | 10 | CHN | ? | F3E | | | chinese (?) OM's chatting |
| REP | 29494 | 10.22 | 12 | 10 | | | FMCW | | | foghorn-like sounds, tones abt 250hz apart |
| REP | 29500 | 13.38 | 11 | 10 | | | FMCW | | | OTH radar |
| REP | 29525 | 09.22 | 19 | 10 | | | F3E | | | poss far eastern language YL and OM chat |
| REP | 29578 | 09.55 | 12 | 10 | | | A1A | | | unid chirping sound, abt 2 per second |
| REP | 29610 | 09.39 | 12 | 10 | | | A1A | | | unid chirping sound |
| REP | 29620 | 09.40 | 12 | 10 | | | A1A | | | unid chirping sound, abt 2 per second |
| REP | 29625 | 13.38 | 11 | 10 | | | FMCW | | | OTH radar |
| REP | 29640 | 13.24 | 05 | 10 | | | FMCW | | | OTH radar |
| REP | 29690 | 09.30 | 12 | 10 | | | F3E | | | unid far eastern language fishermen |

RSGB - Great Britain – G4BOH (Chris)

| Society | kHz | UTC | DD | MM | ITU | IDENT | MODE | REMARKS |
|---------|-------|--------|--------|----|-------|----------------|------|--|
| RSGB | 7120 | Varies | Varies | 10 | SOM | Radio Hargeisa | A3 | Baldock sent service message to Director of Comms, Mogadishu. Reply states that they will investigate and report back! |
| RSGB | 14000 | 24H | 5 | 10 | Italy | NATO? | | STANAG 4285. Baldock made enquiries after location was found be Italy. Signal disappeared immediately! |

SRAL – Finland – OH2BLU (Pekka)

| Society | QRG | TIME | DD | MM | CTRY | IDENT | MODE | BAUD | SHIFT | REMARKS |
|---------|--------|------------|-------------|----|------|--------|-------------|--------|---------|-------------------------------------|
| SRAL | 6999,0 | 1215-1430 | 18. | 10 | | UiMUX | J7D | 12x120 | 12x200 | |
| SRAL | 7000,0 | 0700-1440 | * | 10 | | UiCarr | N0N | | | Days: 11. 25. 26. 28. |
| SRAL | 7008,0 | 0445-1315 | 13. 17. | 10 | | UiPTR | F1B | | 250 | |
| SRAL | 7016,0 | 0530-1330 | * | 10 | RUS | UiPTR | F1B | | 250 | Days: 2. 4. 15. 27. 31. Kaliningrad |
| SRAL | 7018,0 | 0415-0630 | 5. 12. | 10 | RUS | UiPTR | F1B | | 250 | Moscow |
| SRAL | 7018,0 | 1045 | 20. | 10 | | UiMUX | J7D | 12x120 | 12x200 | |
| SRAL | 7020,0 | 0830-1330 | 2. 15. | 10 | | UiPTR | F1B | | 250 | |
| SRAL | 7022,0 | 0610-1300 | 10. 16. | 10 | | UiMUX | J7D | 12x120 | 12x200 | |
| SRAL | 7023,0 | 0500-0620/ | 29. | 10 | | UiMUX | J7D | 12x120 | 12x200 | |
| SRAL | 7025,0 | 1400 | 11. | 10 | | UiPTR | F1B | | 250 | |
| SRAL | 7027,0 | 0615-1920 | * | 10 | RUS | UiMUX | J7D | 12x120 | 12x200 | Days: 15. 17. 18. Kaliningrad |
| SRAL | 7030,0 | 0940-1340 | * | 10 | | UiPTR | F1B | | 250 | Days: 11. 23. 25. 30. |
| SRAL | 7032,0 | h24 | 1.-8. | 10 | RUS | UiMUX | J7D | 12x120 | 12x200 | Voronezh |
| SRAL | 7035,0 | 1755-1920 | 25. | 10 | | UiPTR | F1B | | 250 | |
| SRAL | 7038,7 | h24 | dly | 10 | UKR | D | A1A | | | Sevastopol |
| SRAL | 7038,8 | h24 | 1.-16. | 10 | RUS | P | A1A | | | Kaliningrad |
| SRAL | 7038,9 | h24 | dly | 10 | RUS | S | A1A | | | Severomorsk |
| SRAL | 7039,0 | h24 | dly | 10 | RUS | C | A1A | | | Moscow |
| SRAL | 7044,0 | 1015-1300 | * | 10 | | UiPTR | F1B/ N0N | | 250 | Days: 3. 8. 10. 11. 19. |
| SRAL | 7048,0 | 0825-0925 | 15. | 10 | | UiPTR | F1B | | 250 | |
| SRAL | 7049,0 | 0650-1900 | 1.4. 29. | 10 | | UiPTR | F1B | | 200 | Kaliningrad |
| SRAL | 7049,0 | 0910 | 18. | 10 | | UiCW | A1A | | | 5BL |
| SRAL | 7054,0 | 1700-0700 | 1. | 10 | RUS | REA4 | F1B | | 200 | Moscow |
| SRAL | 7054,0 | 1900-0500 | 2.-31. | 10 | RUS | REA4 | F1B | | 200 | Moscow |
| SRAL | 7059,0 | 0630-1330 | * | 10 | | UiPTR | F1B | | 200/250 | Days: 12. 23. 30. 31. |
| SRAL | 7061,0 | 0530-1330 | 2.9. 11. | 10 | | UiMUX | J7D | 12x120 | 12x200 | |
| SRAL | 7073,0 | 1200-1400 | 8. | 10 | | UiMUX | J7D | 12x120 | 12x200 | Baltic Sea |
| SRAL | 7080,0 | 1700-1845 | 16. | 10 | | UiPTR | F1B | | 200 | |

| Society | QRG | TIME | DD | MM | CTRY | IDENT | MODE | BAUD | SHIFT | REMARKS |
|---------|-------------|------------|---------|----|------|-------------|------|--------|----------|---|
| SRAL | 7090,5 | 1300-1500 | 31. | 10 | | UiMUX | J7D | 12x120 | 12x200 | |
| SRAL | 7100,0 | 1130-1800 | * | 10 | | UiCarr | N0N | | | Days: 17. 19. 21. 22. |
| SRAL | 7105,0 | 2220-2230 | 17. 31. | 10 | CHN | R. China | A3E | | | |
| SRAL | 7110,0 | 1350-1500 | 17. | 10 | | UiBC | A3E | | | Japanese (?) px |
| SRAL | 7111,0 | 0800-1700 | 1. | 10 | | UiPTR | F1B | | 250 | |
| SRAL | 7111,0 | 0530-0745 | 15. | 10 | | UiPTR | F1B | | 250 | |
| SRAL | 7112,0 | 0815-1515 | 20. | 10 | | UiMUX | J7D | 12x120 | 12x200 | |
| SRAL | 7114,0 | 1520-1700 | 8. | 10 | | UiPTR | F1B | | 200 | |
| SRAL | 7114,0 | 1405-1430 | 25. | 10 | | UiMUX | J7D | 12x120 | 12x200 | |
| SRAL | 7115,0 | 0715-0730 | 31. | 10 | | 475 | A1A | | | 5F |
| SRAL | 7117,0 | 1300-1920 | dly | 10 | RUS | UiPTR | F1B | | 500/1000 | On 24 th 7118.0 kHz |
| SRAL | 7118,0 | 0700 | 9. | 10 | | UiMUX | J7D | 12x120 | 12x200 | idling |
| SRAL | 7120,0 | 0230-0430 | dly | 10 | SOM | R. Hargeisa | A3E | | | |
| SRAL | 7120,0 | 1500-1903/ | dly | 10 | SOM | R. Hargeisa | A3E | | | |
| SRAL | 7122,0 | 0455-1610 | 13. | 10 | RUS | UiPTR | F1B | | | Kursk |
| SRAL | 7124,0 | 0600-1100 | 3. 20. | 10 | | UiMUX | J7D | 12x120 | 12x200 | |
| SRAL | 7127,0 | 0830-0835 | 21. | 10 | | UiCW | A1A | | | 5BL |
| SRAL | 7132,0 | 0830-0940 | 12. | 10 | | UiMUX | J7D | 12x120 | 12x200 | |
| SRAL | 7137,0 | 1515-1545 | 3. | 10 | | UiMUX | J7D | 12x120 | 12x200 | |
| SRAL | 7142,0 | 0830-1330 | 10. | 10 | | UiMUX | J7D | 12x120 | 12x200 | |
| SRAL | 7149,0 | 0605-0710 | 17. | 10 | RUS | UiCW | A1A | | | 5BL |
| SRAL | 7150 – 7160 | 1715-1920 | * | 10 | CHN | UiOTHR | FMCW | | | Days: 4. 18. 25. 10kHz/67Hz, 8 sec on 8 sec off |
| SRAL | 7162,0 | 0600-1710 | * | 10 | RUS | UiPTR | F1B | | 200/250 | Days: 9. 10.-12. 23. 25. 30. Kaliningrad |
| SRAL | 7164,0 | 1155 | 9. | 10 | | UiPTR | F1B | | 250 | |
| SRAL | 7169,0 | 0630-1500 | 2. 11. | 10 | RUS | UiPTR | F1B | | | Kaliningrad |
| SRAL | 7172,0 | 1130-1245 | 10. | 10 | | UiMUX | J7D | 12x120 | 12x200 | |
| SRAL | 7176,0 | 0430-1930 | 4. 13. | 10 | | UiPTR | F1B | | 250 | |
| SRAL | 7178,0 | 0425-1255 | 10. 11. | 10 | | UiMUX | J7D | 12x120 | 12x200 | |
| SRAL | 7179,0 | 0830-1500 | 29. 31. | 10 | | UiMUX | J7D | 12x120 | 12x200 | |
| SRAL | 7180,0 | 0230-0530 | dly | 10 | ERI | VoBME 2 | A3E | | | jammed by ETH, QSY 7160 – 7190 kHz |
| SRAL | 7180,0 | 1415-1800 | dly | 10 | ERI | VoBME 2 | A3E | | | QSY 7160 –7190 kHz, jammed by ETH until 1700, |
| SRAL | 7186,0 | 0130 | 5. | 10 | | UiMUX | J7D | 12x120 | 12x200 | |
| SRAL | 7192,0 | 0730-1600 | 7. | 10 | | UiMUX | J7D | 12x120 | 12x200 | |
| SRAL | 7196,0 | 0715-1310 | * | 10 | | PBMZ etc. | A1A | | | Days: 11. 15. 17. 18. 19. 20. 24. 25. |
| SRAL | 7200,0 | 0230- | dly | 10 | SDN | R Sudan | A3E | | | |

| Society | QRG | TIME | DD | MM | CTRY | IDENT | MODE | BAUD | SHIFT | REMARKS |
|---------|---------|------------|----------|----|------|--------------|-------|------|---------|--------------------------------------|
| | | 0500 | | | | | | | | |
| SRAL | 7200,0 | 1430-1900 | 1. | 10 | SDN | R Sudan | A3E | | | |
| SRAL | 7200,0 | 1415-1600 | 2.-31. | 10 | SDN | R Sudan | A3E | | | |
| SRAL | 7200,0 | 1900-2100 | 2.-31. | 10 | SDN | R Sudan | A3E | | | |
| SRAL | 14000,0 | h24 | 2.-6.10. | 10 | | UiCarr | N0N | | | |
| SRAL | 14001,0 | 0840-1325 | * | 10 | | UiCarr | N0N | | | Days: 25. 26. 28. |
| SRAL | 14001,8 | 0500-1930 | 3.-6. | 10 | I | | PSK8 | | | Bologna |
| SRAL | 14008,0 | 0850-1135 | * | 10 | | UiPTR | F1B | | 500 | Days: 3. 10. 12. 14. 26. 30. |
| SRAL | 14080,0 | 0600-0607/ | 23. | 10 | RUS | 438 | R3E-u | | | Female voice |
| SRAL | 14180,0 | 0635-1655 | 10.-12. | 10 | | UiPTR | F1B | | 250 | |
| SRAL | 14192,0 | 0700-1400 | * | 10 | | UiPTR | F1B | | 200/500 | Days: 10. 25.- 31. |
| SRAL | 14212,0 | 1210-1215/ | 25. | 10 | RUS | 425 | R3E-u | | | Female voice |
| SRAL | 14295,1 | h24 | dly | 10 | TJK | R Tojikiston | A3E | | | 3f 4765,05 kHz, Yangiyul TX |
| SRAL | 18 MHz | 0445-1015 | * | 10 | | UiOTHR | FMCW | | | Days: 18. 21. 20kHz/50Hz |
| SRAL | 21 MHz | 0605-1347 | * | 10 | | UiOTHR | FMCW | | | 11 days. 20kHz/50Hz |
| SRAL | 21001,5 | 0445-1430 | * | 10 | | UiPTR | F1B | | 150 | Days: 3. 7. 16. 20.- 24. 27. 28. 31. |
| SRAL | 24 MHz | 0845-1557 | * | 10 | | UiOTHR | FMCW | | | Days: 3. 4. 6. 27. 20kHz/25Hz |
| SRAL | 28 MHz | 0800-1445 | * | 10 | | UiOTHR | FMCW | | | 21 days. 20kHz/50Hz |
| SRAL | 28 MHz | 0625-1320 | * | 10 | CIS | UiVOX | F3E | | | 303 reports |

USKA – Switzerland – HB9CET (Peter)

| SOC | kHz | UTC | DD | MM | ITU | IDENT | MODE | BD | SH (BW) | DETAILS |
|------|--------|------|----|----|-----|-------|-------|----------|---------|---------------------------------|
| USKA | 7000.0 | 0747 | 22 | 10 | | | J3E-U | | | unident voice |
| USKA | 7000.0 | 1549 | 29 | 10 | | | N0N | | | long lasting carrier often |
| USKA | 7001.5 | 2132 | 21 | 10 | | | QPSK | 8 x 62.5 | 2k0 | Clover 2000 often |
| USKA | 7016.0 | 1640 | 16 | 10 | | | F1B | 50 | 250 | |
| USKA | 7020.0 | 1635 | 16 | 10 | | | F1B | 50 | 250 | |
| USKA | 7025.0 | 1635 | 17 | 10 | | | J7D | | 2k6 | CIS12 idling (13 carriers only) |
| USKA | 7027.0 | 2228 | 17 | 10 | | | J7D | | 2k6 | CIS12 idling (13 carriers only) |
| USKA | 7032.0 | 1535 | 01 | 10 | | | J7D | 12x120 | 2k6 | PSK-2: CIS12 = AT3004D daily |
| USKA | 7038.3 | 1549 | 01 | 10 | RUS | K | A1A | | | Beacon K Petropavlovsk |
| USKA | 7038.8 | 1535 | 01 | 10 | RUS | P | A1A | | | Beacon P Kaliningrad daily |
| USKA | 7039.0 | 1535 | 01 | 10 | RUS | C | A1A | | | Beacon C Moscow daily |
| USKA | 7039.2 | 1549 | 01 | 10 | RUS | F | A1A | | | Beacon F Vladivostok daily |
| USKA | 7039.4 | 1548 | 01 | 10 | RUS | M | A1A | | | Beacon M Magadan daily |
| USKA | 7054.0 | 2214 | 01 | 10 | | | F1B | 50 | 200 | daily |
| USKA | 7064.0 | 2048 | 16 | 10 | | | J7D | 12x120 | 2k6 | PSK-4: CIS12 = AT3104D |
| USKA | 7070.0 | 1929 | 01 | 10 | | MV | MFSK8 | 125 | 1k75 | MIL 188-141A |
| USKA | 7070.0 | 0133 | 02 | 10 | | 571 | MFSK8 | 125 | 1k75 | MIL 188-141A daily |
| USKA | 7070.0 | 0138 | 02 | 10 | | 244 | MFSK8 | 125 | 1k75 | MIL 188-141A daily |
| USKA | 7070.0 | 1953 | 18 | 10 | | 514 | MFSK8 | 125 | 1k75 | MIL 188-141A almost daily |
| USKA | 7070.0 | 0153 | 19 | 10 | | 334 | MFSK8 | 125 | 1k75 | MIL 188-141A |
| USKA | 7089.8 | 1857 | 15 | 10 | | | PSK-8 | 2400 | 2k6 | Link 11- SLEW often |
| USKA | 7105.0 | 2209 | 01 | 10 | TWN | | A3E | | | BC (2 stations) daily |
| USKA | 7105.0 | 2209 | 01 | 10 | CHN | | A3E | | | BC (2 stations) daily |
| USKA | 7111.0 | 2211 | 14 | 10 | | | F1B | 50 | 250 | |

| SOC | KHz | UTC | DD | MM | ITU | IDENT | MODE | BD | SH (BW) | DETAILS |
|------|----------|------|----|----|-----|-------|------------|-----------|---------|--|
| USKA | 7117.0 | 1532 | 01 | 10 | | | F1B | 100 | 1k0 | |
| USKA | 7120.0 | 1716 | 04 | 10 | SOM | | A3E | | | Radio Hargeisa daily |
| USKA | 7124.0 | 2214 | 14 | 10 | | | J7D | 12ch | 2k6 | CIS12 system idling (13 carriers) |
| USKA | 7152.0 | 1737 | 04 | 10 | | | FMCW | 66.66 sps | 10k | OTHR BD 7.6s; BRI 15.5s |
| USKA | 7155.0 | 1738 | 04 | 10 | | | FMCW | 66.66 sps | 10k | OTHR BD 3.9s; BRI 15.5s |
| USKA | 7160.0 | 1642 | 16 | 10 | | | A3E | | | BC, jammed often |
| USKA | 7162.0 | 1650 | 12 | 10 | | | F1B | 75 | 250 | |
| USKA | 7165.0 | 1547 | 29 | 10 | | | A3E | | | BC, jammed |
| USKA | 7175.875 | 1921 | 04 | 10 | | | A1 | | | Illegal jammer (dot's only) |
| USKA | 7176.0 | 1921 | 04 | 10 | | | F1B | 75 | 250 | often |
| USKA | 7180.0 | 1648 | 12 | 10 | | | A3E | | | BC, jammed often |
| USKA | 7180.0 | 0258 | 30 | 10 | | | A3E | | | BC |
| USKA | 7185.0 | 1528 | 01 | 10 | | | A3E | | | BC, jammed often |
| USKA | 7190.0 | 1720 | 04 | 10 | | | A3E | | | BC, music |
| USKA | 7200.0 | 1529 | 01 | 10 | | | A3E | | | splattering down ~5 Khz daily |
| USKA | 14000.0 | 1128 | 04 | 10 | | | N0N | | | bearing approx 120° |
| USKA | 14000.0 | 1216 | 29 | 10 | | | N0N A3X | | | long lasting carrier with some short A3 bursts, approx 60° |
| USKA | 14001.0 | 2157 | 25 | 10 | | | N0N | | | |
| USKA | 14001.8 | 1106 | 04 | 10 | | | PSK-8 | 2400 | 2k4 | Stanag 4285; 600 bps long |
| USKA | 14008.0 | 0822 | 18 | 10 | | | F1B | 50 | 500 | often |
| USKA | 14031.0 | 0827 | 08 | 10 | | | J7D | 12x | 2k6 | CIS12 idling (13 carriers) |
| USKA | 14100.0 | 1623 | 30 | 10 | | | FMCW | 2 sps | 50k | CODAR coastal radar bearing approx 90° |
| USKA | 14141.0 | 1539 | 29 | 10 | | | F1B | 75 | 500 | |
| USKA | 14169.0 | 0749 | | 10 | | | F1B | 50 | 200 | |
| USKA | 14192.0 | 1621 | 01 | 10 | | | F1B | 50 | 500 | almost daily |
| USKA | 14234.0 | 1618 | 01 | | | | F1B | 100 | 2k0 | 2 nd from 7117 |
| USKA | 14252.0 | 0959 | 17 | 10 | | | OFDM | | 10k | |
| USKA | 14295.1 | 1841 | 06 | 10 | | | A3E | | | BC, Music; Radio Tajikistan (3 rd of 4765 kHz) |
| USKA | 14318.5 | 0653 | 25 | 10 | | | F1B | 600 | 600 | ARQ |
| USKA | 14324.0 | 1141 | 30 | 10 | | | F1B | 75 | 500 | |
| USKA | 14331.0 | 0746 | 26 | 10 | | 589 | MFSK8 | 125 | 1k75 | MIL 188-141A; to: 183 |
| USKA | 14344.65 | 2231 | 01 | 10 | | | PSK-8 | 2400 | 2k4 | MIL 188-110A Hybrid mod. |
| USKA | 14350.8 | 1025 | 17 | 10 | | | PSK-8 | 2400 | 2k4 | Stanag 4285; 600 bps long |
| USKA | 18107.0 | 1049 | 05 | 10 | | | F1B | 50 | 200 | CIS 36-50 |
| USKA | 21000.0 | 0842 | 05 | 10 | | | N0N | | | long lasting carrier |
| USKA | 21000.0 | 0705 | 25 | 10 | | | N0N A3X | | | long lasting carrier with some short A3 bursts, approx 60° |
| USKA | 21000.0 | 1038 | 31 | 10 | | | FMCW | 50 sps | 20k | OTHR |
| USKA | 21001.5 | 0841 | 05 | 10 | | | F1B | 100 | 150 | Vocoder Yakhta |
| USKA | 21010.0 | 0659 | 25 | 10 | | | N0N A3X | | | long lasting carrier with some short A3 bursts, approx 60° |
| USKA | 21090.0 | 1412 | 04 | 10 | | | FMCW | 50 sps | 20k | OTHR |
| USKA | 21123.3 | 0939 | 08 | 10 | | | PSK4 | 75 | 2k25 | PRC 4+4 – traffic and idle |
| USKA | 21136.0 | 0944 | 30 | 10 | | | FMCW | 66.66 sps | 10k | OTHR BD 4s; BRI 24s |
| USKA | 21177.0 | 0851 | 04 | 10 | | | FMCW | 66.66 sps | 10k | OTHR BD 3.8s; BRI 15.3s |
| USKA | 21190.0 | 0638 | 25 | 10 | | | F1B | 100 | 1k0 | 2 nd from 10595: 100Bd/500Hz |
| USKA | 21190.0 | 0956 | 26 | 10 | | | FMCW | 50 sps | 20k | OTHR |
| USKA | 21196.8 | 0904 | 26 | 10 | | | PSK4 | 75 | 2k25 | PRC 4+4 – traffic an idle |
| USKA | 21230.0 | 0953 | 20 | 10 | | | FMCW | 50 sps | 20k | OTHR |
| USKA | 21233.3 | 0914 | 03 | 10 | | | PSK4 | 75 | 2k25 | PRC 4+4 – traffic and idle -often |
| USKA | 21250.0 | 1335 | 06 | 10 | | | FMCW | 50 sps | 20k | OTHR |
| USKA | 21300.0 | 0756 | 19 | 10 | | | F1B | 100 | 500 | 4 rd from 5325 often |
| USKA | 21319.0 | 0744 | 19 | 10 | | | FMCW | 66.66 sps | 10k | OTHR BD 3.8; BRI 15.3s |
| USKA | 21345.0 | 0838 | 04 | 10 | | | FMCW | 66.66 sps | 10k | OTHR BD 3.8s; BRI 15.3s |
| USKA | 21350.0 | 1157 | 05 | 10 | | | FMCW | 50 sps | 20k | OTHR |
| USKA | 21355.0 | 0838 | 04 | 10 | | | FMCW | 66.66 sps | 10k | OTHR BD 3.8s; BRI 15.3s |
| USKA | 21371.3 | 0834 | 08 | 10 | | | PSK4 | 75 | 2k25 | PRC 4+4 - traffic |
| USKA | 21390.0 | 0843 | 04 | 10 | | | FMCW | 66.66 sps | 10k | OTHR BD 3.8; BRI 15.3s |
| USKA | 21400.0 | 1009 | 03 | 10 | | | F1B | 50 | 2000 | 4 rd from 5350 often |
| USKA | 21428.0 | 0843 | 04 | 10 | | | FMCW | 66.66 sps | 10k | OTHR BD 3.8s; BRI 15.3s |
| USKA | 21438.0 | 0813 | 03 | 10 | | RCV | A1A | | | |
| USKA | 21440.8 | 1131 | 19 | 10 | | | PSK-8 | 2400 | 2k4 | unid |
| USKA | 24970.0 | 0748 | 19 | 10 | | | FMCW | 50 sps | 20k | OTHR |
| USKA | 28025.0 | 1025 | 22 | 10 | | | F1B | 51 | 300 | often |

| SOC | kHz | UTC | DD | MM | ITU | IDENT | MODE | BD | SH (BW) | DETAILS |
|------|----------|------|----|----|-----|-------|------|--------|---------|---------|
| USKA | 28025.1 | 1031 | 22 | 10 | | | F1B | 51 | 300 | often |
| USKA | 28025.15 | 1029 | 22 | 10 | | | F1B | 51 | 300 | often |
| USKA | 28035.0 | 1012 | 17 | 10 | | | FMCW | 50 sps | 20k | OTHR |
| USKA | 28200.0 | 0857 | 05 | 10 | | | FMCW | 50 sps | 20k | OTHR |
| USKA | 28300.0 | 1045 | 21 | 10 | | | FMCW | 50 sps | 20k | OTHR |
| USKA | 28630.0 | 0800 | 18 | 10 | | | FMCW | 50 sps | 20k | OTHR |
| USKA | 29090.0 | 0858 | 26 | 10 | | | FMCW | 50 sps | 20k | OTHR |

Some F3E services in the 10m Band (mostly all days) - and there are many many more

| | | | | | | | | | | |
|------|---------|------|----|----|--|--|-----|--|--|--|
| USKA | 28065.0 | 1013 | 18 | 10 | | | F3E | | | |
| USKA | 28085.0 | 1014 | 18 | 10 | | | F3E | | | |
| USKA | 28135.0 | 1017 | 18 | 10 | | | F3E | | | |
| USKA | 28145.0 | 1021 | 18 | 10 | | | F3E | | | |
| USKA | 28155.0 | 1019 | 18 | 10 | | | F3E | | | |
| USKA | 28165.0 | 1018 | 18 | 10 | | | F3E | | | |
| USKA | 28255.0 | 0857 | 05 | 10 | | | F3E | | | |
| USKA | 28265.0 | 0855 | 05 | 10 | | | F3E | | | |
| USKA | 28275.0 | 0856 | 05 | 10 | | | F3E | | | |
| USKA | 28325.0 | 0855 | 05 | 10 | | | F3E | | | |
| USKA | 28345.0 | 0854 | 05 | 10 | | | F3E | | | |
| USKA | 28355.0 | 0855 | 05 | 10 | | | F3E | | | |
| USKA | 28385.0 | 0854 | 05 | 10 | | | F3E | | | |
| USKA | 28555.0 | 0853 | 05 | 10 | | | F3E | | | |
| USKA | 28750.0 | 0852 | 05 | 10 | | | F3E | | | |
| USKA | 28795.0 | 0848 | 05 | 10 | | | F3E | | | |
| USKA | 28800.0 | 0848 | 05 | 10 | | | F3E | | | |
| USKA | 28825.0 | 0849 | 05 | 10 | | | F3E | | | |
| USKA | 28855.0 | 0850 | 05 | 10 | | | F3E | | | |
| USKA | 28875.0 | 0851 | 05 | 10 | | | F3E | | | |

Veron 1 – Netherlands – PA2GRU (Dick)

| SOC | kHz | UTC | DD | MM | ITU | IDENT | MODE | SHIFT | DETAILS |
|-------|--------|-------|----|----|-----|-------|------|-------|-----------------------------------|
| VERON | 3503,0 | 19.37 | 30 | 10 | | UiPTR | F1B | | Ptr |
| VERON | 3578,0 | 16.14 | 7 | 10 | | UiPTR | F1B | | Ptr |
| VERON | 7026,0 | 19.45 | 17 | 10 | ? | ? | J7D | | 12 channels |
| VERON | 7030,0 | 13.55 | 30 | 10 | | UiPTR | F1B | | Ptr |
| VERON | 7030,0 | 19.08 | 18 | 10 | | UiMux | FSK2 | | 12 MPSK AT3004D |
| VERON | 7032,0 | 18.17 | 7 | 10 | RUS | UiMux | PSK | | 12 MPSK AT3004D |
| VERON | 7038,7 | 16.35 | 18 | 10 | UKR | D | A1A | | D-beacon |
| VERON | 7038,8 | 14.58 | 13 | 10 | RUS | P | A1A | | Beacon Kaliningrad |
| VERON | 7038,8 | 18.44 | 8 | 10 | RUS | P | A1A | | beacon, Kaliningrad, also 10/10 |
| VERON | 7038,9 | 21.55 | 20 | 10 | RUS | S | A1A | | Beacon Murmansk |
| VERON | 7038,9 | 14.35 | 27 | 10 | RUS | S | A1A | | Beacon Murmansk |
| VERON | 7039,0 | 16.35 | 18 | 10 | RUS | C | A1A | | C-beacon |
| VERON | 7039,0 | 13.43 | 1 | 10 | RUS | C | A1A | | C-beacon |
| VERON | 7039,2 | 19.50 | 19 | 10 | RUS | F | A1A | | F-beacon |
| VERON | 7039,4 | 19.54 | 19 | 10 | RUS | M | A1A | | M-beacon |
| VERON | 7049,0 | 14.44 | 29 | 10 | | UiPTR | F1B | | Ptr |
| VERON | 7054,0 | 21.54 | 20 | 10 | RUS | UiPtr | F1B | 200 | Bad signal |
| VERON | 7054,0 | 19.35 | 30 | 10 | CIS | UiPTR | F1B | | Revs/Ptr |
| VERON | 7054,0 | 19.10 | 18 | 10 | RUS | REA4 | F1B | 200 | Printer, Rus. Airforce nr. Moscow |
| VERON | 7054,0 | 19.16 | 22 | 10 | RUS | REA4 | F1B | 200 | Ptinter, Rus Airforce, also 23/10 |
| VERON | 7056,0 | 19.01 | 10 | 10 | | VOBME | XXX | | roaring noise |
| VERON | 7056,0 | 15.41 | 12 | 10 | | UiMux | XXX | | roaring noise |
| VERON | 7056,5 | 17.26 | 20 | 10 | | UiMux | PSK4 | | |
| VERON | 7059,0 | 08.26 | 4 | 10 | | UiPTR | F1B | | Ptr |
| VERON | 7080,0 | 19.50 | 17 | 10 | ? | ? | F1B | 250 | revs, ptr |
| VERON | 7080,0 | 19.05 | 10 | 10 | | ST | F1A | 250 | ptr |
| VERON | 7111,0 | 13.42 | 1 | 10 | | UiPTR | F1B | | Ptr |
| VERON | 7117,0 | 17.18 | 20 | 10 | RUS | UiPtr | F1B | 1k | Bad signal |
| VERON | 7117,0 | 19.51 | 22 | 10 | | UiPtr | F1B | 1000 | Revs |

| SOC | kHz | UTC | DD | MM | ITU | IDENT | MODE | SHIFT | DETAILS |
|-------|---------|-------|----|----|-----|--------------|------|-------|---|
| VERON | 7120,0 | 17.53 | 13 | 10 | SOM | R.Hargaysa | A3E | | HOA music;s7 |
| VERON | 7120,0 | 18.45 | 8 | 10 | SOM | R.Harg | A3E | | speech and music, harmful S-7 |
| VERON | 7120,0 | 19.06 | 10 | 10 | SOM | Hargay | A3E | | speech and music, harmful S-7 |
| VERON | 7122,0 | 12.39 | 13 | 10 | | UiPtr | F1B | 200 | |
| VERON | 7122,0 | 19.08 | 10 | 10 | | UiPtr | F1B | 250 | printer |
| VERON | 7127,0 | 17.12 | 22 | 10 | ? | ? | A1A | | 5F |
| VERON | 7162,0 | 15.38 | 12 | 10 | RUS | UiPtr | F1B | 250 | Revs/Ptr |
| VERON | 7165,0 | 10.43 | 21 | 10 | | | | | Frequency hopper |
| VERON | 7169,0 | 06.53 | 11 | 10 | ? | ? | F1B | 250 | ptr |
| VERON | 7176,0 | 12.34 | 13 | 10 | RUS | UiPtr | F1B | 250 | |
| VERON | 7176,0 | 14.14 | 13 | 10 | ? | ? | F1B | 200 | ptr |
| VERON | 7180,0 | 17.32 | 13 | 10 | ERI | VOBME | A3E | | Arabic px & music; s6 |
| VERON | 7198,0 | 19.00 | 15 | 10 | RUS | BC | A3E | | splatter from BC loud and clear |
| VERON | 10103,0 | 15.31 | 12 | 10 | | UiCAR | NON | | carrier, S-9 |
| VERON | 10123,0 | 09.05 | 29 | 10 | | UiPTR | F1B | | Ptr |
| VERON | 10130,0 | vt | vd | 10 | | UiPTR | F1B | | Ptr |
| VERON | 14008,0 | 08.10 | 3 | 10 | CIS | UiPTR | F1B | | Carrier/Revs/Ptr |
| VERON | 14008,0 | 10.23 | 21 | 10 | | UiPtr | F1B | 200 | printer |
| VERON | 14066,8 | 07.17 | 25 | 10 | ? | WEGI | A1A | | XXX WEGI 42200 WENDETTA 2050 6770 K |
| VERON | 14141,0 | 12.02 | 26 | 10 | | UiPTR | F1B | | Pts (also at 29/10 1437 utc) |
| VERON | 14169,0 | 07.15 | 24 | 10 | ? | ? | F1B | 250 | ptr |
| VERON | 14169,0 | 08.00 | 17 | 10 | | UiPTR | F1B | | Ptr |
| VERON | 14192,0 | 09.08 | 10 | 10 | RUS | UiPtr | F1B | 200 | Revs, Kaliningrad |
| VERON | 14192,0 | 09.04 | 11 | 10 | RUS | UiPtr | F1B | 500 | Revs, Kaliningrad |
| VERON | 14227,0 | 10.07 | 19 | 10 | RUS | UiCAR | NON | | strong carrier |
| VERON | 14240,0 | 10.05 | 9 | 10 | | UiPTR | F1B | | Ptr |
| VERON | 14240,0 | 09.00 | 9 | 10 | RUS | UiPtr | F1B | 250 | printer, nr Smolensk |
| VERON | 14260,0 | 09.50 | 17 | 10 | | UiMux | XXX | | roaring noise |
| VERON | 14295,0 | 14.38 | 17 | 10 | TJK | R.Tajikistan | A3E | | Little distorted modulation |
| VERON | 18090,0 | 15.07 | 13 | 10 | | OTHR | FMCW | | radar, wide 20 KHz |
| VERON | 18107,0 | 09.15 | 12 | 10 | RUS | UiPTR | F1B | | Revs/Ptr |
| VERON | 18107,0 | 10.18 | 16 | 10 | RUS | UiCW | F1A | | 5F |
| VERON | 18107,0 | 08.11 | 17 | 10 | RUS | UiCW | F1A | | XXX XXX (followed by F1B Revs/Ptr) |
| VERON | 18107,0 | 08.28 | 22 | 10 | RUS | RGT77 | F1A | | XXX RGT77 43108 00565 GWERILXaZ |
| VERON | 18107,0 | 08.28 | | | | | | | 8380 2371 UWAROWIT 2205 6744 k |
| VERON | 18107,0 | 08.38 | 22 | 10 | RUS | W6BY | F1A | | UUU XXX W6BY 85319 10769 VERDNaK |
| VERON | 18107,0 | 08.38 | | | | | | | 3713 8183 KERGELEN 0709 2225 k |
| VERON | 18107,0 | 13.57 | 30 | 10 | RUS | RDL | F1A | | XXX RDL 32972 91642 SALXNA |
| VERON | 18107,0 | 13.57 | | | | | | | 3063 9666 k legal |
| VERON | 21001,0 | 10.40 | 31 | 10 | | OTHR | FMCW | | radar, 20985-21009 KHz |
| VERON | 21001,5 | 10.00 | 21 | 10 | RUS | UiPtr | F1B | 150 | vocoder Yaktha |
| VERON | 21005,0 | 13.18 | 24 | 10 | | UiPtr | F1B | | printer |
| VERON | 21090,0 | 09.19 | 9 | 10 | | OTHR | FMCW | | radar, wide 21087-21110 KHz |
| VERON | 21140,0 | 11.49 | 14 | 10 | | OTHR | FMCW | | radar, wide 20 KHz |
| VERON | 21190,0 | 12.27 | 27 | 10 | | OTHR | FMCW | | radar, wide 20 KHz |
| VERON | 21315,0 | 11.50 | 14 | 10 | | | | | Frequency hopper |
| VERON | 21420,0 | 11.40 | 27 | 10 | | | | | Frequency hopper |
| VERON | 21438,0 | 13.31 | 7 | 10 | RUS | RJV | A1A | | XXX RJV 94010 GAGA 1557 6324 K |
| VERON | 21438,0 | 08.00 | 12 | 10 | RUS | RCV | A1A | | to RIP90, RBE86: pln tfc |
| VERON | 21438,0 | 08.25 | 12 | 10 | RUS | RCV | A1A | | to RFH71: proc |
| VERON | 21438,0 | 08.27 | 24 | 10 | RUS | RCV | A1A | | RIP90 DE RCV QTC 309 44 1 1521 309 = |
| VERON | 21438,0 | 08.27 | 24 | 10 | RUS | RCV | A1A | | NAWIP 033 1990 KARTA (etc) |
| VERON | 28140,0 | 09.07 | 23 | 10 | RUS | Taxi buss. | F3E | | male/female |
| VERON | 28145,0 | 12.58 | 4 | 10 | RUS | Taxi buss. | F3E | | male/female |
| VERON | 28150,0 | 11.45 | 18 | 10 | RUS | Taxi buss. | F3E | | male/female |
| VERON | 28155,0 | 12.05 | 16 | 10 | RUS | Taxi buss. | F3E | | male/female |

| SOC | kHz | UTC | DD | MM | ITU | IDENT | MODE | SHIFT | DETAILS |
|-------|---------|-------|----|----|-----|------------|------|-------|------------------|
| VERON | 28175,0 | 11.45 | 18 | 10 | RUS | Taxi buss. | F3E | | male/female |
| VERON | 28185,0 | 09.07 | 23 | 10 | RUS | Taxi buss. | F3E | | male/female |
| VERON | 28187,0 | 09.25 | 14 | 10 | | OTHR | FMCW | | 50sps |
| VERON | 28195,0 | 10.25 | 28 | 10 | RUS | Taxi buss. | F3E | | male/female |
| VERON | 28250,0 | 10.21 | 28 | 10 | RUS | Taxi buss. | F3E | | male/female |
| VERON | 28250,0 | 10.22 | 28 | 10 | | S | A1A | | beacon, fishery |
| VERON | 28300,0 | 09.37 | 21 | 10 | | OTHR | FMCW | 25k | 50sps |
| VERON | 28380,0 | 12.14 | 21 | 10 | CIS | Taxi buss. | F3E | | Russian language |

The monitoring team of IARU Region 1

Many thanks for your interest!

credits:

Wavecom Elektronik – Buelach – Switzerland

SSB-Electronic – Iserlohn – Germany

BAZ – Special Antennas – Bad Bergzabern - Germany

FTS – Funktechnik Seipelt – Hoppegarten - Germany

German PTT (BNetzA = Federal Network Agency)

compiled and published by DK2OM

November 2012